

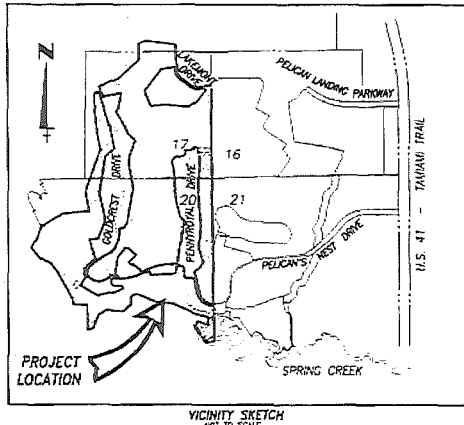
**PELICAN LANDING UNIT FIVE**  
A REPLAT OF TRACTS "A", "B" AND "C" OF  
PELICAN'S NEST UNIT ONE, PLAT BOOK 41, PAGES 58-60 AND A PART OF  
SECTIONS 17 & 20, TOWNSHIP 47 SOUTH, RANGE 25 EAST, LEE COUNTY, FLORIDA

**NOTICE**

LANDS DESCRIBED IN THIS PLAT ARE SUBDIVIDED BY THE DEVELOPER WITHOUT THE ROADS, DRAINAGE AND SEWER FACILITIES BEING ACCEPTED FOR MAINTENANCE BY LEE COUNTY. ANY PURCHASER OF A LOT IN THIS SUBDIVISION IS ADVISED THAT HE MAY BE SUBJECT TO ASSESSMENT OR CALLED UPON TO BEAR A PORTION OR ALL OF THE EXPENSE OF CONSTRUCTION, MAINTENANCE OR IMPROVEMENT OF ROADS, DRAINAGE AND SEWER FACILITIES.

**NOTICE**

THERE MAY BE ADDITIONAL RESTRICTIONS THAT ARE NOT RECORDED ON THIS PLAT THAT MAY BE FOUND IN THE PUBLIC RECORDS OF THIS COUNTY.



**NOTES**

- DN DENOTES A DASHED LINE, WHERE APPLICABLE.
  - DNV DENOTES A NON-RADIAL LINE, WHERE APPLICABLE.
  - DL DENOTES A DRAINAGE EASEMENT.
  - UL DENOTES A UTILITY EASEMENT.
  - LL DENOTES A LAKE MAINTENANCE EASEMENT.
  - MW DENOTES A MAINTENANCE EASEMENT.
  - OR DENOTES OFFICIAL RECORD BOOK.
  - PL DENOTES PLAT BOOK.
  - RE DENOTES A RENTERS EASEMENT.
  - AE DENOTES ACCESS EASEMENT.
  - P DENOTES PACE.
  - ME DENOTES MAINTENANCE EASEMENT.
0. DENOTES FOUND 5/8" IRON REBAR AND CAP, UNLESS OTHERWISE SHOWN.
  1. DENOTES SET 5/8" IRON REBAR AND CAP, STAMPED FASTS, UNLESS OTHERWISE SHOWN.
  2. DENOTES FOUND POB (PERMANENT CONTROL POINT) UNLESS OTHERWISE SHOWN.
  3. DENOTES FOUND PPM (PERMANENT REFERENCE MONUMENT) 4x4 CONCRETE, 40" DIAMETER, STAMPED FASTS, UNLESS OTHERWISE SHOWN.
  4. DENOTES SET PPM (PERMANENT CONTROL POINT) UNLESS OTHERWISE SHOWN.
  5. DENOTES SET PPM (PERMANENT REFERENCE MONUMENT) 4x4 CONCRETE, 40" DIAMETER, STAMPED FASTS, UNLESS OTHERWISE SHOWN.
  6. DENOTES SET PPM (PERMANENT REFERENCE MONUMENT) 4x4 CONCRETE, 40" DIAMETER, STAMPED FASTS, UNLESS OTHERWISE SHOWN.
  7. DENOTES A LINE REFERENCE NUMBER AND REFERS TO THE LINE NUMBER, BEARING AND DISTANCE CONTAINED IN THE LINE TABLE, WHERE APPLICABLE.
  8. DENOTES A CURVE REFERENCE NUMBER AND REFERS TO THE CURVE NUMBER AND CURVE DATA CONTAINED IN THE CURVE TABLE, WHERE APPLICABLE.
- ALL CURVES SHOWN HEREIN ARE CIRCULAR.  
DISTANCES SHOWN HEREIN ARE IN FEET AND/OR DECIMAL FEET.  
BEARINGS SHOWN HEREIN ARE BASED ON THE WEST LINE OF THE NORTHEAST 1/4 OF SECTION 21, TOWNSHIP 47 SOUTH, RANGE 25 EAST, 88°03'53"W. DETERMINATION OF A HIGH WATER LINE LOCATION HAS NOT BEEN MADE, SEVENTH ORDINANCE WITHIN TRACT "C", "D", AND "F" MAY EXIST.  
ALL PRIVATE ROADS ARE PUBLIC UTILITY EASEMENTS.

**ACKNOWLEDGMENT**

STATE OF FLORIDA  
COUNTY OF LEE  
THE FOREGOING DEDICATION WAS ACKNOWLEDGED BEFORE ME THIS 25 DAY OF JANUARY, 1998, A.D. BY JERRY M. SCHEER, SENIOR VICE PRESIDENT AND WILSON M. HASTON, SECRETARY OF WILSON, MILLER, BARTON & PEEK, INC. A FLORIDA NOT-FOR-PROFIT CORPORATION, ON BEHALF OF THE CORPORATION. THEY ARE PERSONALLY KNOWN TO ME OR HAVE PRODUCED AS IDENTIFICATION.

*Janet M. Suterly*  
NOTARY PUBLIC - STATE OF FLORIDA  
NAME (PRINTED)  
JANET M. SUTERLY  
10 550 197 JANUARY 23, 1998  
COMMISSION #          EXPIRES         

**ACKNOWLEDGMENT**

STATE OF FLORIDA  
COUNTY OF LEE  
THE FOREGOING DEDICATION WAS ACKNOWLEDGED BEFORE ME THIS 22 DAY OF DECEMBER, 1996, A.D. BY DOUGLAS L. SCHWARTZ, PRESIDENT AND KATHERINE C. GREEN, VICE PRESIDENT OF PELICAN LANDING COMMUNITY ASSOCIATION, INC. A FLORIDA NOT-FOR-PROFIT CORPORATION, ON BEHALF OF THE CORPORATION. THEY ARE PERSONALLY KNOWN TO ME OR HAVE PRODUCED AS IDENTIFICATION.

*Douglas L. Schwartz*  
NAME (PRINTED)  
Douglas L. Schwartz  
NOTARY PUBLIC - STATE OF FLORIDA  
*Katharine C. Green*  
NAME (PRINTED)  
Katharine C. Green  
COMMISSION #          OCT. 11, 1991  
COMMISSION EXPIRES         

**APPROVALS**

THIS PLAT IS ACCEPTED AND APPROVED BY THE BOARD OF COUNTY COMMISSIONERS, LEE COUNTY, FLORIDA THIS 19 DAY OF DECEMBER, 1996.

CHAIRMAN OF THE BOARD: *Charles Green*  
CLERK OF COURT: *Charles Green*  
COUNTY ATTORNEY: *Walter J. McCarthy*  
DIRECTOR, DEPARTMENT OF COMMUNITY DEVELOPMENT: *MARY E. PERRY*

4055119

**CLERK'S CERTIFICATE**

I HEREBY CERTIFY THAT THIS PLAT OF PELICAN LANDING UNIT FIVE, A REPLAT OF TRACTS "A", "B" AND "C" OF PELICAN'S NEST UNIT ONE, PLAT BOOK 41, PAGES 58-60 AND A PART OF SECTIONS 17 AND 20, TOWNSHIP 47 SOUTH, RANGE 25 EAST, LEE COUNTY, FLORIDA, A SUBDIVISION LOCATED IN SECTIONS 17 AND 20, TOWNSHIP 47 SOUTH, RANGE 25 EAST, LEE COUNTY, FLORIDA, HAS BEEN DRAWN BY ME AND FROM MY EXAMINATION I FIND THAT SAID PLAT COMPLES WITH THE REQUIREMENTS OF CHAPTER 177 OF THE FLORIDA STATUTES.

I FURTHER CERTIFY THAT SAID PLAT WAS FILED FOR RECORDS THIS 23 DAY OF JANUARY, 1998, A.D., AND DEED RECORDED IN PLAT BOOK 41 PAGES 58 THROUGH 60 OF THE PUBLIC RECORDS OF LEE COUNTY, FLORIDA.

*Charles Green*  
NAME (PRINTED)  
Charles Green  
CLERK OF THE COUNTY COURT AND 1998 LEE COUNTY, FLORIDA.

**SURVEYOR'S CERTIFICATE**

I HEREBY CERTIFY THAT THE ATTACHED PLAT OF PELICAN LANDING UNIT FIVE, A REPLAT OF TRACTS "A", "B" AND "C" OF PELICAN'S NEST UNIT ONE, PLAT BOOK 41, PAGES 58-60 AND A PART OF SECTIONS 17 AND 20, TOWNSHIP 47 SOUTH, RANGE 25 EAST, LEE COUNTY, FLORIDA, IS A TRUE AND CORRECT REPRESENTATION OF THE HEREIN DESCRIBED LOTS ACCORDING TO A RECENT SURVEY MADE AND PLATTED UNDER MY DIRECTION AND SUPERVISION AND STATED. I FURTHER CERTIFY THAT THE PERMANENT REFERENCE MONUMENTS (POINTS) AND PERMANENT CONTROL POINTS (POB'S) HAVE BEEN PLACED AT THE LOCATIONS SHOWN ON THIS PLAT.

WESLEY MILLER, SHAWN G. PEEK, INC.  
*Wesley Miller*  
NAME (PRINTED)  
Wesley Miller  
DATE 0-14-96

*Wesley Miller*  
NAME (PRINTED)  
Wesley Miller  
DATE 0-14-96

**DEDICATION**

KNOW ALL MEN BY THESE PRESENTS THAT WILSON, MILLER, BARTON & PEEK, INC. A FLORIDA LIMITED PARTNERSHIP, AS SUCCESSOR TO PELICAN LANDING COMMUNITIES, INC., PELICAN LANDING COMMUNITY ASSOCIATION, INC., A FLORIDA NOT-FOR-PROFIT CORPORATION, AND PELICAN'S NEST GOLF CLUB, INC. A FLORIDA NOT-FOR-PROFIT CORPORATION (CORPORATIONS), OWNERS OF THE LANDS DESCRIBED HEREIN HAVE CAUSED THIS PLAT OF PELICAN LANDING UNIT FIVE, A REPLAT OF TRACTS "A", "B" AND "C" OF THE PLAT OF PELICAN'S NEST UNIT ONE, AS RECORDED IN PLAT BOOK 41, PAGES 58-60, PUBLIC RECORDS OF LEE COUNTY, FLORIDA, AND A PART OF SECTIONS 17 AND 20, TOWNSHIP 47 SOUTH, RANGE 25 EAST, LEE COUNTY, FLORIDA, TO BE MADE, AND DO HEREBY MAKE THE FOLLOWING DEDICATIONS:

TO THE BASSE APPROVEMENT COMMUNITY DEVELOPMENT DISTRICT, ITS SUCCESSORS AND ASSIGNS, ALL OF THE PRIVATE ROAD RIGHTS-OF-WAY HEREIN REFERRED TO AS TRACTS "A" AND "F" (LANDING DRIVE), TRACT "B" (PERIMETRAL DRIVE) AND TRACT "C" (PELICAN'S NEST DRIVE), TOGETHER WITH LANDSCAPING AND SOILAGE IMPROVEMENTS NOW ON OR HEREAFTER COMPLETED THEREIN, FOR THE PURPOSES OF ACCESS AND EGRESS, MAINTENANCE, REPAIR AND REPLACEMENT OF ROAD, LANDSCAPING AND SOILAGE, RECEIVING SAID DEDICATIONS, THEIR SUCCESSORS AND ASSIGNS, EMPLOYEES AND ANY OTHER PARTY, A PERPETUAL RIGHT FOR ACCESS AND EGRESS ON AND OVER SAID TRACTS "A", "B", "C", "E", "F" AND "G".

TO THE PELICAN LANDING COMMUNITY ASSOCIATION, INC., ITS SUCCESSORS AND ASSIGNS, ALL OF TRACT "H" (COURSE PARK), TOGETHER WITH ALL LANDSCAPING, SOILAGE, CANOE STORAGE AND DOCKING FACILITIES AND PARKING AREAS NOW ON HEREAFTER COMPLETED THEREIN, FOR THE PURPOSES, INCLUDING BUT NOT LIMITED TO, COMMUNITY ASSOCIATION PARK AND RECREATIONAL USES, INSTALLATION, MAINTENANCE, REPAIR AND REPLACEMENT OF LANDSCAPING, IRRIGATION, SOILAGE, CANOE STORAGE, CANOE STORAGE AND DOCKING FACILITIES AND PARKING AREAS.

TO THE BASSE APPROVEMENT COMMUNITY DEVELOPMENT DISTRICT, ITS SUCCESSORS AND ASSIGNS, ALL OF TRACTS "I", "J" AND "K" (CONSERVATION AND DRAINAGE TRACTS) FOR THE PURPOSES OF OPEN SPACE, WETLAND PRESERVATION, DRAINAGE AND MAINTENANCE; TO THE BASSE APPROVEMENT COMMUNITY DEVELOPMENT DISTRICT, ITS SUCCESSORS AND ASSIGNS, ALL EASEMENTS HEREIN LABELED "WATER MANAGEMENT MAINTENANCE EASEMENT" (INCLUDING PART OF TRACTS "I", "J", "K" AND "L") AS SHOWN ON THIS PLAT AS A WATER MANAGEMENT MAINTENANCE EASEMENT, FOR PURPOSES OF WATER MANAGEMENT, DRAINAGE, LAKE AND/OR WETLAND MAINTENANCE.

TO THE BASSE APPROVEMENT COMMUNITY DEVELOPMENT DISTRICT, ITS SUCCESSORS AND ASSIGNS, ALL EASEMENTS HEREIN LABELED "WATER MANAGEMENT DRAINAGE EASEMENT" (INCLUDING PART OF TRACTS "I", "J", "K" AND "L") AS SHOWN ON THIS PLAT AS A WATER MANAGEMENT DRAINAGE EASEMENT, FOR PURPOSES OF INSTALLATION, REPAIR AND MAINTENANCE OF ITS DRAINAGE FACILITIES WITHIN SAID DRAINAGE EASEMENTS.

TO THE BASSE APPROVEMENT COMMUNITY DEVELOPMENT DISTRICT, ITS SUCCESSORS AND ASSIGNS, AND TO THE RESPECTIVE GOVERNMENTAL AGENCIES AND PUBLIC UTILITIES HAVING THE AUTHORITY TO PROVIDE FOR SUCH SERVICES, ALL UTILITIES HEREIN LABELED "UTILITY EASEMENT" (INCLUDING PART OF TRACTS "I", "J", "K", "L", "M", "N" AND "O") AS SHOWN ON THIS PLAT AS A UTILITY EASEMENT, FOR PURPOSES OF INSTALLATION, REPAIR AND MAINTENANCE OF THEIR RESPECTIVE FACILITIES, INCLUDING WATER, SEWER, IRRIGATION, ELECTRIC, STREET LIGHTING, CABLE TELEVISION AND TELEPHONE.

TO THE BAY CREEK COMMUNITY DEVELOPMENT DISTRICT, ITS SUCCESSORS AND ASSIGNS, AND TO THE RESPECTIVE GOVERNMENTAL AGENCIES AND PUBLIC UTILITIES HAVING THE AUTHORITY TO PROVIDE FOR SUCH SERVICES, A NON-EXCLUSIVE ACCESS EASEMENT OVER, UNDER AND "T" AS SHOWN ON THIS PLAT AS A UTILITY EASEMENT, FOR PURPOSES OF ACCESS TO THEIR RESPECTIVE FACILITIES WITHIN THE DRAINAGE, MAINTENANCE AND UTILITY EASEMENTS SHOWN HEREON.

IN WITNESS WHEREOF, WILSON, MILLER, BARTON & PEEK, INC. PELICAN LANDING COMMUNITY ASSOCIATION, INC. AND PELICAN'S NEST GOLF CLUB, INC. HAVE CAUSED THESE PRESENTS TO BE MADE AND SIGNED BY THEIR NAMES AND ATTENDED BY THEIR RESPECTIVE OFFICERS THIS 22 DAY OF DECEMBER, 1996, A.D.

WILSON, MILLER, BARTON & PEEK, INC.  
(SUCCESSOR TO PELICAN LANDING COMMUNITIES, INC.)  
*Jerry M. Scheer*  
NAME (PRINTED)  
Jerry M. Scheer  
VICE PRESIDENT  
WILSON, MILLER, BARTON & PEEK, INC.  
*Wilson M. Haston*  
NAME (PRINTED)  
Wilson M. Haston  
SECRETARY  
WILSON, MILLER, BARTON & PEEK, INC.

PELICAN LANDING COMMUNITY ASSOCIATION, INC.  
*Douglas L. Schwartz*  
NAME (PRINTED)  
Douglas L. Schwartz  
PRESIDENT  
PELICAN LANDING COMMUNITY ASSOCIATION, INC.  
*Katharine C. Green*  
NAME (PRINTED)  
Katharine C. Green  
VICE PRESIDENT  
PELICAN LANDING COMMUNITY ASSOCIATION, INC.

PELICAN'S NEST GOLF CLUB, INC.  
*Frank Barton*  
NAME (PRINTED)  
Frank Barton  
PRESIDENT  
PELICAN'S NEST GOLF CLUB, INC.  
*James A. Patterson*  
NAME (PRINTED)  
James A. Patterson  
SECRETARY  
PELICAN'S NEST GOLF CLUB, INC.

**WILSON, MILLER, BARTON & PEEK, INC.**  
ENGINEERS • SURVEYORS • PLANNERS • ENVIRONMENTAL CONSULTANTS • LANDSCAPE ARCHITECTS • CONSTRUCTION MANAGERS  
4571 Gouvenor Boulevard Fort Myers, Florida 33912 (941) 939-1020 Fax (941) 939-7479

58-59-01-00 000  
58-59-02-00 000  
58-59-03-00 000  
58-59-04-00 000  
58-59-05-00 000

# PELICAN LANDING UNIT FIVE

A REPLAT OF TRACTS "A", "B" AND "C" OF  
PELICAN'S NEST UNIT ONE, PLAT BOOK 41, PAGES 58-60 AND A PART OF  
SECTIONS 17 & 20, TOWNSHIP 47 SOUTH, RANGE 25 EAST, LEE COUNTY, FLORIDA

### DESCRIPTION OF LANDS PLATED:

LEGAL DESCRIPTION #1  
ALL THAT PART OF SECTION 17 AND ALL THAT PART OF SECTION 20, TOWNSHIP 47 SOUTH, RANGE 25 EAST, LEE COUNTY, FLORIDA, BEING PART OF PELICAN'S NEST UNIT ONE, PLAT BOOK 41, PAGES 58-60, AS RECORDED IN OFFICIAL RECORD BOOK 207, PAGES 204 THROUGH 208, WHICH ARE MORE PARTICULARLY DESCRIBED AS FOLLOWS:

LEGAL DESCRIPTION #2  
ALL THAT PART OF SECTION 17 AND ALL THAT PART OF SECTION 20, TOWNSHIP 47 SOUTH, RANGE 25 EAST, LEE COUNTY, FLORIDA, BEING PART OF PELICAN'S NEST UNIT ONE, PLAT BOOK 41, PAGES 58-60, AS RECORDED IN OFFICIAL RECORD BOOK 207, PAGES 204 THROUGH 208, WHICH ARE MORE PARTICULARLY DESCRIBED AS FOLLOWS:

LEGAL DESCRIPTION #3  
ALL THAT PART OF SECTION 17 AND ALL THAT PART OF SECTION 20, TOWNSHIP 47 SOUTH, RANGE 25 EAST, LEE COUNTY, FLORIDA, BEING PART OF PELICAN'S NEST UNIT ONE, PLAT BOOK 41, PAGES 58-60, AS RECORDED IN OFFICIAL RECORD BOOK 207, PAGES 204 THROUGH 208, WHICH ARE MORE PARTICULARLY DESCRIBED AS FOLLOWS:

LEGAL DESCRIPTION #4  
ALL THAT PART OF SECTION 17 AND ALL THAT PART OF SECTION 20, TOWNSHIP 47 SOUTH, RANGE 25 EAST, LEE COUNTY, FLORIDA, BEING PART OF PELICAN'S NEST UNIT ONE, PLAT BOOK 41, PAGES 58-60, AS RECORDED IN OFFICIAL RECORD BOOK 207, PAGES 204 THROUGH 208, WHICH ARE MORE PARTICULARLY DESCRIBED AS FOLLOWS:

LEGAL DESCRIPTION #5  
ALL THAT PART OF SECTION 17 AND ALL THAT PART OF SECTION 20, TOWNSHIP 47 SOUTH, RANGE 25 EAST, LEE COUNTY, FLORIDA, BEING PART OF PELICAN'S NEST UNIT ONE, PLAT BOOK 41, PAGES 58-60, AS RECORDED IN OFFICIAL RECORD BOOK 207, PAGES 204 THROUGH 208, WHICH ARE MORE PARTICULARLY DESCRIBED AS FOLLOWS:

LEGAL DESCRIPTION #6  
ALL THAT PART OF SECTION 17 AND ALL THAT PART OF SECTION 20, TOWNSHIP 47 SOUTH, RANGE 25 EAST, LEE COUNTY, FLORIDA, BEING PART OF PELICAN'S NEST UNIT ONE, PLAT BOOK 41, PAGES 58-60, AS RECORDED IN OFFICIAL RECORD BOOK 207, PAGES 204 THROUGH 208, WHICH ARE MORE PARTICULARLY DESCRIBED AS FOLLOWS:

LEGAL DESCRIPTION #7  
ALL THAT PART OF SECTION 17 AND ALL THAT PART OF SECTION 20, TOWNSHIP 47 SOUTH, RANGE 25 EAST, LEE COUNTY, FLORIDA, BEING PART OF PELICAN'S NEST UNIT ONE, PLAT BOOK 41, PAGES 58-60, AS RECORDED IN OFFICIAL RECORD BOOK 207, PAGES 204 THROUGH 208, WHICH ARE MORE PARTICULARLY DESCRIBED AS FOLLOWS:

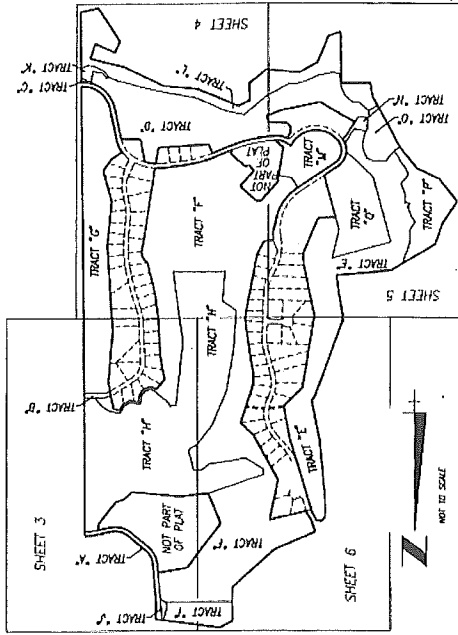
LEGAL DESCRIPTION #8  
ALL THAT PART OF SECTION 17 AND ALL THAT PART OF SECTION 20, TOWNSHIP 47 SOUTH, RANGE 25 EAST, LEE COUNTY, FLORIDA, BEING PART OF PELICAN'S NEST UNIT ONE, PLAT BOOK 41, PAGES 58-60, AS RECORDED IN OFFICIAL RECORD BOOK 207, PAGES 204 THROUGH 208, WHICH ARE MORE PARTICULARLY DESCRIBED AS FOLLOWS:

LEGAL DESCRIPTION #9  
ALL THAT PART OF SECTION 17 AND ALL THAT PART OF SECTION 20, TOWNSHIP 47 SOUTH, RANGE 25 EAST, LEE COUNTY, FLORIDA, BEING PART OF PELICAN'S NEST UNIT ONE, PLAT BOOK 41, PAGES 58-60, AS RECORDED IN OFFICIAL RECORD BOOK 207, PAGES 204 THROUGH 208, WHICH ARE MORE PARTICULARLY DESCRIBED AS FOLLOWS:

LEGAL DESCRIPTION #10  
ALL THAT PART OF SECTION 17 AND ALL THAT PART OF SECTION 20, TOWNSHIP 47 SOUTH, RANGE 25 EAST, LEE COUNTY, FLORIDA, BEING PART OF PELICAN'S NEST UNIT ONE, PLAT BOOK 41, PAGES 58-60, AS RECORDED IN OFFICIAL RECORD BOOK 207, PAGES 204 THROUGH 208, WHICH ARE MORE PARTICULARLY DESCRIBED AS FOLLOWS:

LEGAL DESCRIPTION #11  
ALL THAT PART OF SECTION 17 AND ALL THAT PART OF SECTION 20, TOWNSHIP 47 SOUTH, RANGE 25 EAST, LEE COUNTY, FLORIDA, BEING PART OF PELICAN'S NEST UNIT ONE, PLAT BOOK 41, PAGES 58-60, AS RECORDED IN OFFICIAL RECORD BOOK 207, PAGES 204 THROUGH 208, WHICH ARE MORE PARTICULARLY DESCRIBED AS FOLLOWS:

LEGAL DESCRIPTION #12  
ALL THAT PART OF SECTION 17 AND ALL THAT PART OF SECTION 20, TOWNSHIP 47 SOUTH, RANGE 25 EAST, LEE COUNTY, FLORIDA, BEING PART OF PELICAN'S NEST UNIT ONE, PLAT BOOK 41, PAGES 58-60, AS RECORDED IN OFFICIAL RECORD BOOK 207, PAGES 204 THROUGH 208, WHICH ARE MORE PARTICULARLY DESCRIBED AS FOLLOWS:



KEY MAP

TRACT	USE	AREA (AC.)	AREA (SQ.FT.)
1	RODMAN	1.54	67,029
2	RODMAN	0.28	12,797
3	RODMAN	0.08	3,513
4	RODMAN	0.08	3,513
5	RODMAN	0.08	3,513
6	RODMAN	0.08	3,513
7	RODMAN	0.08	3,513
8	RODMAN	0.08	3,513
9	RODMAN	0.08	3,513
10	RODMAN	0.08	3,513
11	RODMAN	0.08	3,513
12	RODMAN	0.08	3,513
13	RODMAN	0.08	3,513
14	RODMAN	0.08	3,513
15	RODMAN	0.08	3,513
16	RODMAN	0.08	3,513
17	RODMAN	0.08	3,513
18	RODMAN	0.08	3,513
19	RODMAN	0.08	3,513
20	RODMAN	0.08	3,513

WILSON, MILLER, BARTON & PEEK, INC.  
4271 Colonial Boulevard Fort Myers, Florida 33911 Tel. (813) 939-2476  
FAX (813) 939-2475  
E-MAIL: WILSONMILLER@AOL.COM

# PELICAN LANDING UNIT FIVE

A REPLAT OF TRACTS "A", "B" AND "C" OF  
PELICAN'S NEST UNIT ONE, PLAT BOOK 41, PAGES 58-60 AND A PART OF  
SECTIONS 17 & 20, TOWNSHIP 47 SOUTH, RANGE 25 EAST, LEE COUNTY, FLORIDA

LINE TABLE

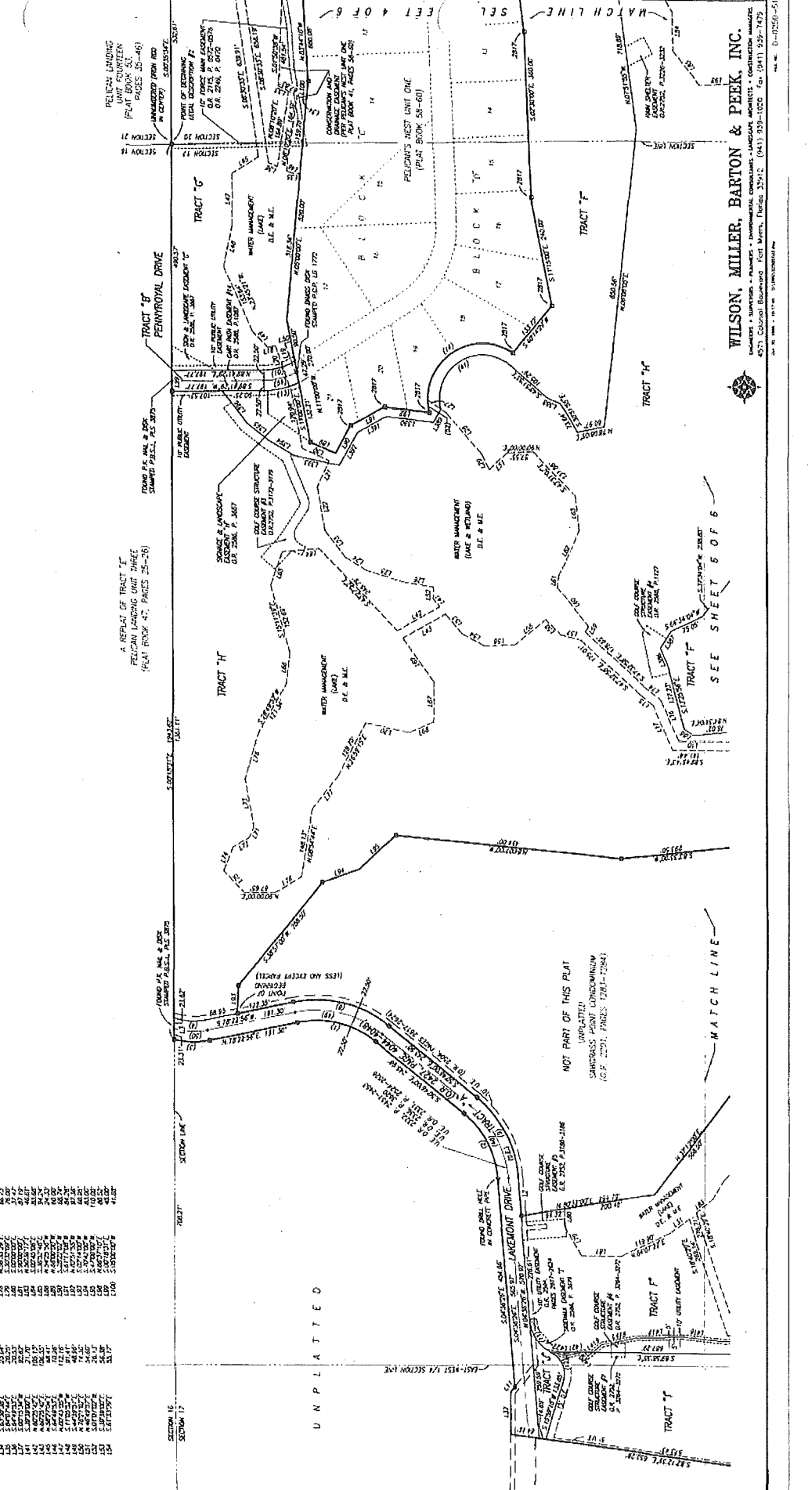
LINE TABLE

LINE TABLE

NO.	ADIUS	DELTA	CHORD	CHORD BEARING	ARC
1	100.00	3.49	3.49	S 89° 56' 18" W	3.49
2	100.00	7.00	7.00	S 89° 56' 18" W	7.00
3	100.00	10.51	10.51	S 89° 56' 18" W	10.51
4	100.00	14.02	14.02	S 89° 56' 18" W	14.02
5	100.00	17.53	17.53	S 89° 56' 18" W	17.53
6	100.00	21.04	21.04	S 89° 56' 18" W	21.04
7	100.00	24.55	24.55	S 89° 56' 18" W	24.55
8	100.00	28.06	28.06	S 89° 56' 18" W	28.06
9	100.00	31.57	31.57	S 89° 56' 18" W	31.57
10	100.00	35.08	35.08	S 89° 56' 18" W	35.08
11	100.00	38.59	38.59	S 89° 56' 18" W	38.59
12	100.00	42.10	42.10	S 89° 56' 18" W	42.10
13	100.00	45.61	45.61	S 89° 56' 18" W	45.61
14	100.00	49.12	49.12	S 89° 56' 18" W	49.12
15	100.00	52.63	52.63	S 89° 56' 18" W	52.63
16	100.00	56.14	56.14	S 89° 56' 18" W	56.14
17	100.00	59.65	59.65	S 89° 56' 18" W	59.65
18	100.00	63.16	63.16	S 89° 56' 18" W	63.16
19	100.00	66.67	66.67	S 89° 56' 18" W	66.67
20	100.00	70.18	70.18	S 89° 56' 18" W	70.18
21	100.00	73.69	73.69	S 89° 56' 18" W	73.69
22	100.00	77.20	77.20	S 89° 56' 18" W	77.20
23	100.00	80.71	80.71	S 89° 56' 18" W	80.71
24	100.00	84.22	84.22	S 89° 56' 18" W	84.22
25	100.00	87.73	87.73	S 89° 56' 18" W	87.73
26	100.00	91.24	91.24	S 89° 56' 18" W	91.24
27	100.00	94.75	94.75	S 89° 56' 18" W	94.75
28	100.00	98.26	98.26	S 89° 56' 18" W	98.26
29	100.00	101.77	101.77	S 89° 56' 18" W	101.77
30	100.00	105.28	105.28	S 89° 56' 18" W	105.28
31	100.00	108.79	108.79	S 89° 56' 18" W	108.79
32	100.00	112.30	112.30	S 89° 56' 18" W	112.30

CURVE TABLE

NO.	ADIUS	DELTA	CHORD	CHORD BEARING	ARC
1	100.00	3.49	3.49	S 89° 56' 18" W	3.49
2	100.00	7.00	7.00	S 89° 56' 18" W	7.00
3	100.00	10.51	10.51	S 89° 56' 18" W	10.51
4	100.00	14.02	14.02	S 89° 56' 18" W	14.02
5	100.00	17.53	17.53	S 89° 56' 18" W	17.53
6	100.00	21.04	21.04	S 89° 56' 18" W	21.04
7	100.00	24.55	24.55	S 89° 56' 18" W	24.55
8	100.00	28.06	28.06	S 89° 56' 18" W	28.06
9	100.00	31.57	31.57	S 89° 56' 18" W	31.57
10	100.00	35.08	35.08	S 89° 56' 18" W	35.08
11	100.00	38.59	38.59	S 89° 56' 18" W	38.59
12	100.00	42.10	42.10	S 89° 56' 18" W	42.10
13	100.00	45.61	45.61	S 89° 56' 18" W	45.61
14	100.00	49.12	49.12	S 89° 56' 18" W	49.12
15	100.00	52.63	52.63	S 89° 56' 18" W	52.63
16	100.00	56.14	56.14	S 89° 56' 18" W	56.14
17	100.00	59.65	59.65	S 89° 56' 18" W	59.65
18	100.00	63.16	63.16	S 89° 56' 18" W	63.16
19	100.00	66.67	66.67	S 89° 56' 18" W	66.67
20	100.00	70.18	70.18	S 89° 56' 18" W	70.18
21	100.00	73.69	73.69	S 89° 56' 18" W	73.69
22	100.00	77.20	77.20	S 89° 56' 18" W	77.20
23	100.00	80.71	80.71	S 89° 56' 18" W	80.71
24	100.00	84.22	84.22	S 89° 56' 18" W	84.22
25	100.00	87.73	87.73	S 89° 56' 18" W	87.73
26	100.00	91.24	91.24	S 89° 56' 18" W	91.24
27	100.00	94.75	94.75	S 89° 56' 18" W	94.75
28	100.00	98.26	98.26	S 89° 56' 18" W	98.26
29	100.00	101.77	101.77	S 89° 56' 18" W	101.77
30	100.00	105.28	105.28	S 89° 56' 18" W	105.28
31	100.00	108.79	108.79	S 89° 56' 18" W	108.79
32	100.00	112.30	112.30	S 89° 56' 18" W	112.30



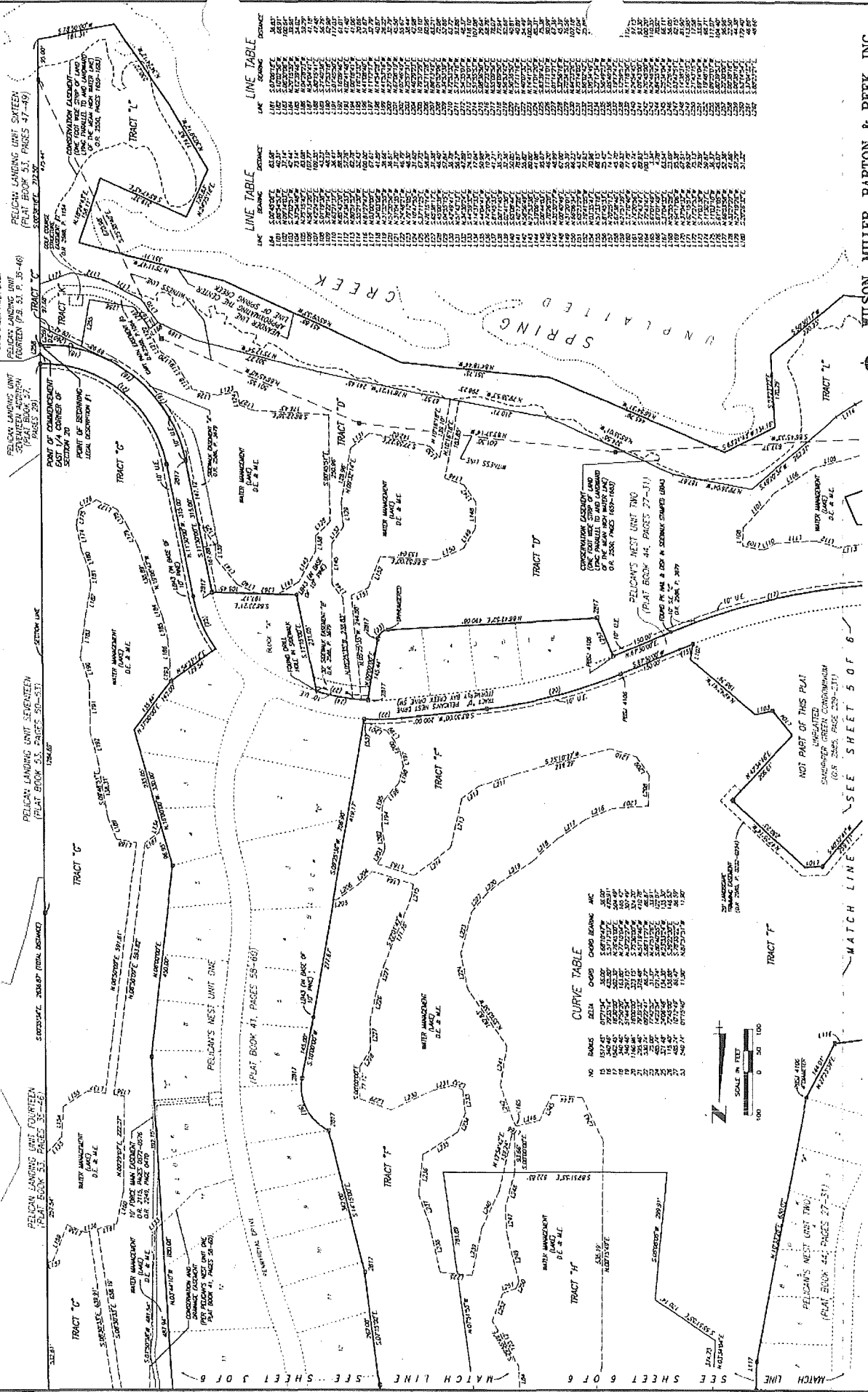
**WILSON, MILLER, BARTON & PECK, INC.**

SURVEYORS - PLANNERS - INSTRUMENTAL CONSULTANTS - LANDSCAPE ARCHITECTS - CONSTRUCTION MANAGERS  
4575 Colonial Boulevard Fort Worth, Texas 76106 (817) 335-1000 Fax (817) 335-7475

DATE: 11/18/14  
DRAWN BY: JMB

# PELICAN LANDING UNIT FIVE

A REPLAY OF TRACTS "A", "B" AND "C" OF PELICAN'S NEST UNIT ONE, PLAT BOOK 41, PAGES 58-60 AND A PART OF SECTIONS 17 & 20, TOWNSHIP 47 SOUTH, RANGE 25 EAST, LEE COUNTY, FLORIDA

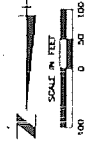


LINE	BEARING	DISTANCE
1	N 89° 00' 00" E	1.000
2	S 89° 00' 00" W	1.000
3	N 01° 00' 00" E	1.000
4	S 01° 00' 00" W	1.000
5	N 89° 00' 00" E	1.000
6	S 89° 00' 00" W	1.000
7	N 01° 00' 00" E	1.000
8	S 01° 00' 00" W	1.000
9	N 89° 00' 00" E	1.000
10	S 89° 00' 00" W	1.000
11	N 01° 00' 00" E	1.000
12	S 01° 00' 00" W	1.000
13	N 89° 00' 00" E	1.000
14	S 89° 00' 00" W	1.000
15	N 01° 00' 00" E	1.000
16	S 01° 00' 00" W	1.000
17	N 89° 00' 00" E	1.000
18	S 89° 00' 00" W	1.000
19	N 01° 00' 00" E	1.000
20	S 01° 00' 00" W	1.000

LINE	BEARING	DISTANCE
21	N 89° 00' 00" E	1.000
22	S 89° 00' 00" W	1.000
23	N 01° 00' 00" E	1.000
24	S 01° 00' 00" W	1.000
25	N 89° 00' 00" E	1.000
26	S 89° 00' 00" W	1.000
27	N 01° 00' 00" E	1.000
28	S 01° 00' 00" W	1.000
29	N 89° 00' 00" E	1.000
30	S 89° 00' 00" W	1.000
31	N 01° 00' 00" E	1.000
32	S 01° 00' 00" W	1.000
33	N 89° 00' 00" E	1.000
34	S 89° 00' 00" W	1.000
35	N 01° 00' 00" E	1.000
36	S 01° 00' 00" W	1.000
37	N 89° 00' 00" E	1.000
38	S 89° 00' 00" W	1.000
39	N 01° 00' 00" E	1.000
40	S 01° 00' 00" W	1.000

**CURVE TABLE**

NO.	RADIUS	CHORD	CHORD BEARING	ARC	ANGLE
1	100.00	100.00	N 89° 00' 00" E	1.000	89° 00' 00"
2	100.00	100.00	S 89° 00' 00" W	1.000	89° 00' 00"
3	100.00	100.00	N 01° 00' 00" E	1.000	01° 00' 00"
4	100.00	100.00	S 01° 00' 00" W	1.000	01° 00' 00"
5	100.00	100.00	N 89° 00' 00" E	1.000	89° 00' 00"
6	100.00	100.00	S 89° 00' 00" W	1.000	89° 00' 00"
7	100.00	100.00	N 01° 00' 00" E	1.000	01° 00' 00"
8	100.00	100.00	S 01° 00' 00" W	1.000	01° 00' 00"
9	100.00	100.00	N 89° 00' 00" E	1.000	89° 00' 00"
10	100.00	100.00	S 89° 00' 00" W	1.000	89° 00' 00"
11	100.00	100.00	N 01° 00' 00" E	1.000	01° 00' 00"
12	100.00	100.00	S 01° 00' 00" W	1.000	01° 00' 00"

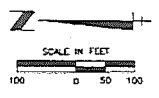
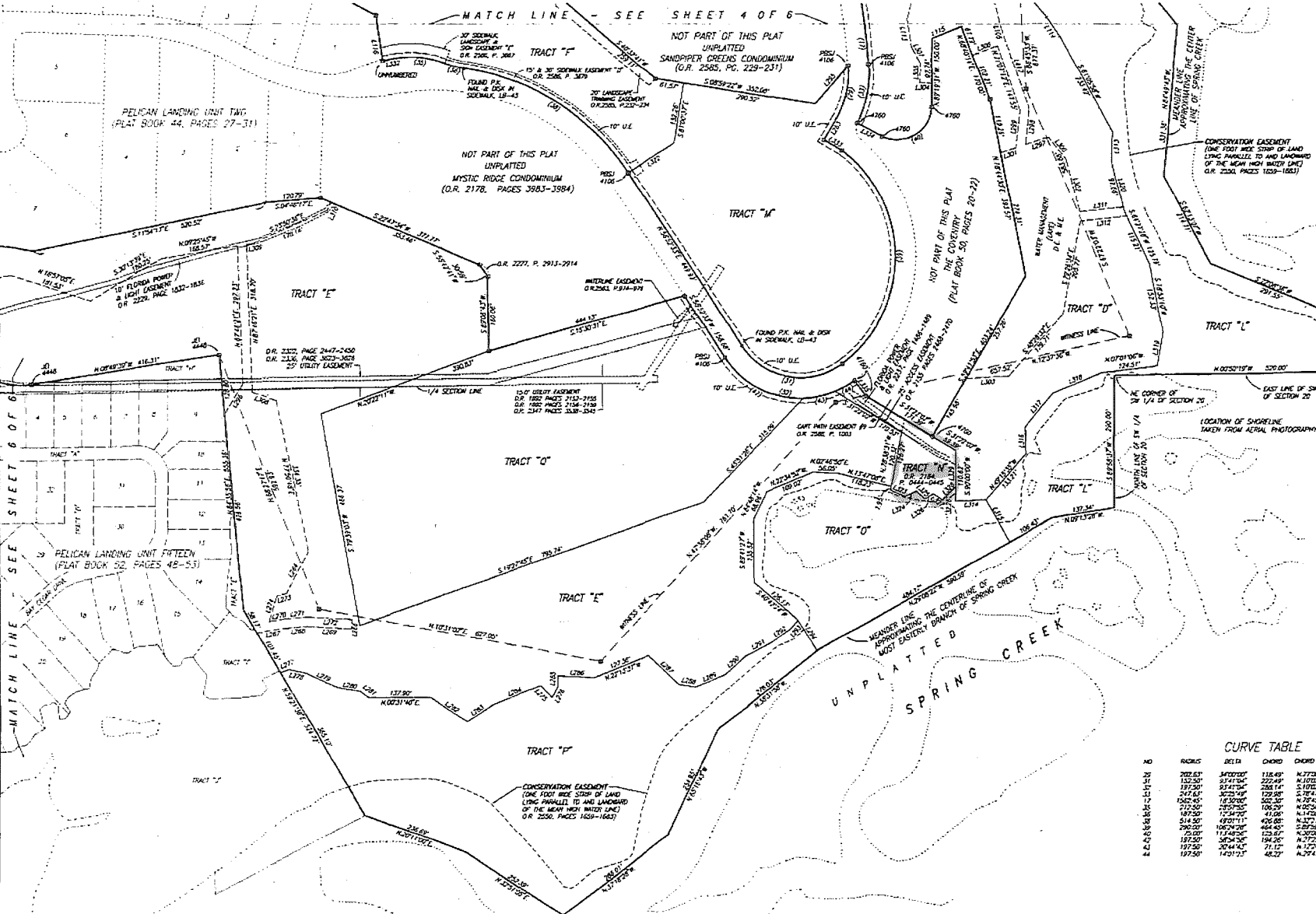


**WILSON MILLER, BARTON & PECK, INC.**  
 427 Colonial Boulevard, Fort Worth, Texas 76102, (817) 335-1020, Fax: (817) 335-7478

SEE SHEET 6 OF 6  
 MATCH LINE  
 SEE SHEET 5 OF 6  
 MATCH LINE  
 NOT PART OF THIS PLAT  
 UNPLATTED SPRING  
 SHOWS PREVIOUS CONVEYANCE  
 (PLAT BOOK 44, PAGES 27-31)

# PELICAN LANDING UNIT FIVE

A REPLAT OF TRACTS "A", "B" AND "C" OF  
PELICAN'S NEST UNIT ONE, PLAT BOOK 41, PAGES 58-60 AND A PART OF  
SECTIONS 17 & 20, TOWNSHIP 47 SOUTH, RANGE 25 EAST, LEE COUNTY, FLORIDA



**LINE TABLE**

LINE	BEARING	DISTANCE
L105	N 72°15'42"E	83.00'
L113	N 82°31'52"E	32.43'
L115	N 22°15'40"E	89.18'
L118	N 82°31'52"E	102.00'
L263	N 82°31'52"E	34.14'
L264	S 81°29'40"E	100.00'
L265	S 87°20'00"E	59.41'
L268	N 02°25'11"E	53.25'
L269	N 02°25'11"E	112.52'
L270	N 02°25'11"E	25.85'
L271	N 02°25'11"E	78.82'
L272	S 71°42'51"E	23.09'
L273	S 71°42'51"E	26.83'
L274	N 02°25'11"E	28.75'
L275	N 02°25'11"E	19.45'
L276	N 11°41'54"E	15.56'
L279	N 02°25'11"E	26.72'
L280	N 02°25'11"E	31.12'
L281	N 11°20'54"E	22.47'
L282	N 02°25'11"E	63.89'
L283	N 02°25'11"E	112.52'
L284	N 02°25'11"E	25.85'
L285	N 02°25'11"E	78.82'
L286	N 02°25'11"E	38.00'
L287	N 44°20'11"E	59.41'
L288	N 42°30'00"E	42.77'
L289	N 02°25'11"E	62.22'
L290	N 02°25'11"E	78.77'
L291	N 02°25'11"E	28.18'
L292	N 02°25'11"E	83.94'
L293	N 02°25'11"E	118.15'
L294	N 02°25'11"E	42.84'
L295	N 02°25'11"E	56.81'
L296	N 02°25'11"E	38.75'
L297	N 02°25'11"E	13.72'
L298	N 02°25'11"E	20.28'
L299	N 02°25'11"E	98.20'
L300	N 02°25'11"E	102.00'
L301	N 02°25'11"E	71.72'
L302	N 02°25'11"E	66.84'
L303	N 02°25'11"E	105.91'
L304	N 02°25'11"E	114.60'
L305	N 02°25'11"E	73.89'
L306	N 02°25'11"E	103.74'
L307	N 02°25'11"E	118.60'
L308	N 02°25'11"E	93.60'
L309	N 02°25'11"E	27.36'
L310	N 02°25'11"E	21.82'
L311	N 02°25'11"E	44.52'
L312	N 02°25'11"E	44.52'
L313	N 02°25'11"E	44.52'
L314	N 02°25'11"E	44.52'
L315	N 02°25'11"E	44.52'
L316	N 02°25'11"E	44.52'
L317	N 02°25'11"E	44.52'
L318	N 02°25'11"E	44.52'
L319	N 02°25'11"E	44.52'
L320	N 02°25'11"E	44.52'
L321	N 02°25'11"E	44.52'
L322	N 02°25'11"E	44.52'
L323	N 02°25'11"E	44.52'
L324	N 02°25'11"E	44.52'
L325	N 02°25'11"E	44.52'
L326	N 02°25'11"E	44.52'
L327	N 02°25'11"E	44.52'
L328	N 02°25'11"E	44.52'
L329	N 02°25'11"E	44.52'
L330	N 02°25'11"E	44.52'
L331	N 02°25'11"E	44.52'
L332	N 02°25'11"E	44.52'
L333	N 02°25'11"E	44.52'
L334	N 02°25'11"E	44.52'
L335	N 02°25'11"E	44.52'
L336	N 02°25'11"E	44.52'
L337	N 02°25'11"E	44.52'
L338	N 02°25'11"E	44.52'
L339	N 02°25'11"E	44.52'
L340	N 02°25'11"E	44.52'

**CURVE TABLE**

NO	RADIUS	BCI	CHORD BEARING	ARC
1	2021.63'	347°02'00"	N 77°20'15"E	128.24'
2	152.50'	93°41'54"	N 10°20'00"E	249.25'
3	198.25'	91°47'54"	N 10°20'00"E	372.81'
4	247.65'	30°23'30"	S 78°47'00"E	131.52'
5	160.95'	19°30'00"	S 78°47'00"E	504.90'
6	213.50'	29°23'30"	N 08°26'00"E	107.47'
7	160.95'	19°30'00"	N 14°32'00"E	41.74'
8	514.50'	09°01'11"	N 37°13'15"E	446.16'
9	290.00'	100°24'00"	S 29°59'15"E	338.50'
10	250.00'	111°48'00"	N 30°56'15"E	148.80'
11	197.50'	58°24'00"	N 70°20'00"E	302.80'
12	197.50'	30°44'45"	N 120°44'45"	71.51'
13	197.50'	14°01'15"	N 29°47'45"E	48.34'

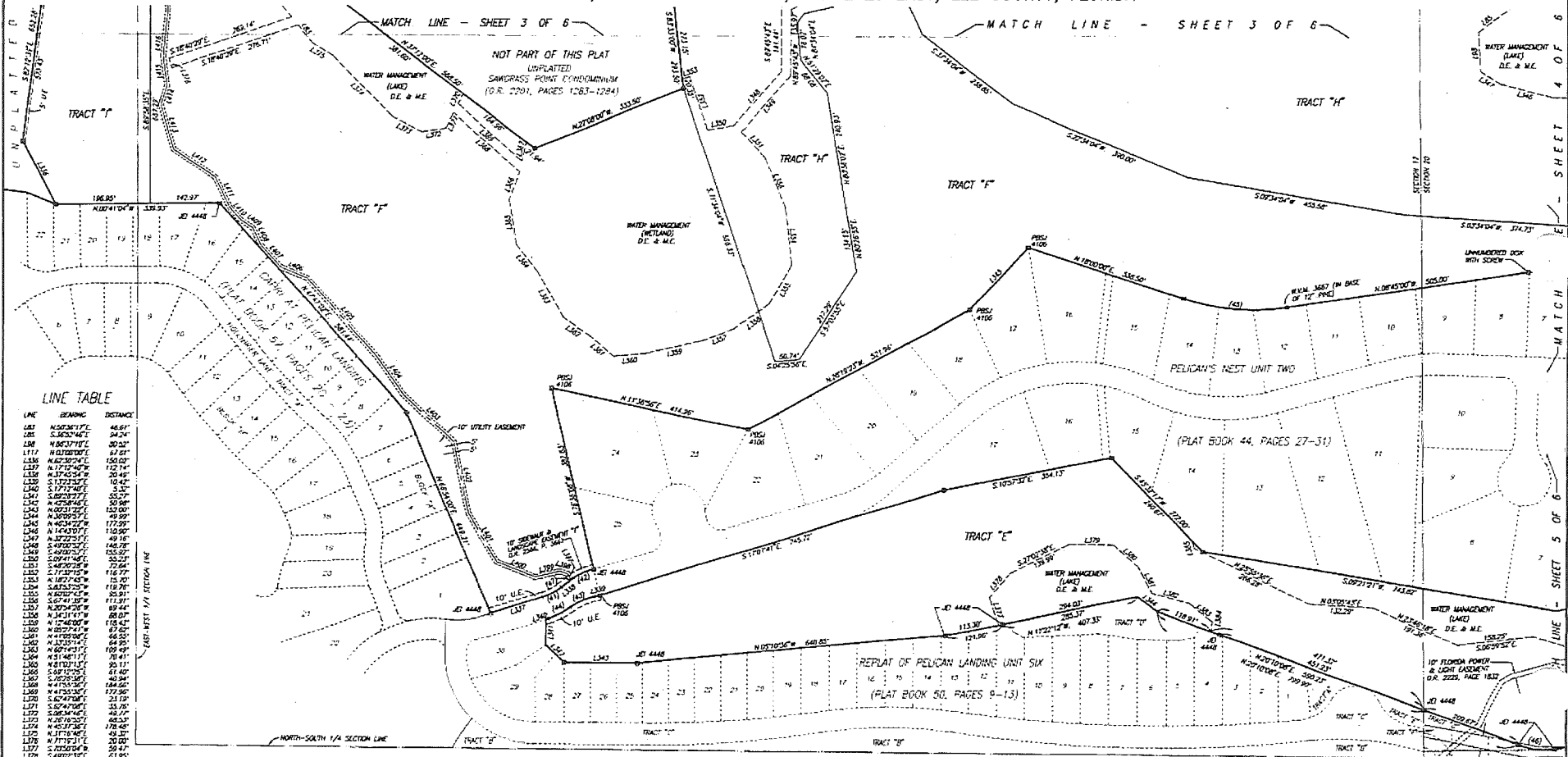
**WILSON, MILLER, BARTON & PEEK, INC.**  
ENGINEERS • SURVEYORS • PLANNERS • ENVIRONMENTAL CONSULTANTS • LANDSCAPE ARCHITECTS • CONSTRUCTION MANAGERS  
4571 Colonial Boulevard, Fort Myers, Florida 33912 (941) 939-1020 Fax (941) 939-7479

MATCH LINE SEE SHEET 6 OF 6

MATCH LINE - SEE SHEET 4 OF 6

# PELICAN LANDING UNIT FIVE

A REPLAT OF TRACTS "A", "B" AND "C" OF  
 PELICAN'S NEST UNIT ONE, PLAT BOOK 41, PAGES 58-60 AND A PART OF  
 SECTIONS 17 & 20, TOWNSHIP 47 SOUTH, RANGE 25 EAST, LEE COUNTY, FLORIDA



LINE TABLE

LINE	BEARING	DISTANCE
L01	N 50° 31' 17" E	46.61'
L02	S 80° 34' 42" E	34.04'
L03	N 88° 37' 18" E	30.23'
L04	N 10° 10' 00" E	67.51'
L05	N 62° 32' 00" E	150.00'
L06	N 17° 12' 40" E	112.74'
L07	N 37° 54' 30" E	30.45'
L08	S 17° 12' 32" E	10.42'
L09	S 17° 11' 40" E	5.32'
L10	S 89° 23' 17" E	35.77'
L11	N 60° 02' 22" E	120.00'
L12	N 50° 31' 17" E	29.59'
L13	N 40° 34' 22" W	177.29'
L14	N 1° 44' 30" E	110.50'
L15	N 30° 23' 20" E	49.18'
L16	S 49° 20' 37" E	146.78'
L17	S 49° 20' 37" E	105.00'
L18	S 69° 41' 40" E	35.21'
L19	S 49° 20' 37" E	116.77'
L20	N 10° 10' 00" E	15.20'
L21	N 10° 10' 00" E	119.78'
L22	N 60° 02' 22" E	35.81'
L23	N 67° 41' 30" E	111.31'
L24	N 30° 23' 20" E	89.44'
L25	N 31° 11' 17" E	88.07'
L26	N 17° 40' 00" E	116.41'
L27	N 30° 23' 20" E	87.50'
L28	N 47° 03' 00" E	66.53'
L29	N 30° 23' 20" E	64.95'
L30	N 67° 41' 30" E	109.49'
L31	N 31° 11' 17" E	70.41'
L32	N 67° 41' 30" E	35.11'
L33	N 60° 02' 22" E	35.40'
L34	N 30° 23' 20" E	40.34'
L35	N 47° 03' 00" E	184.56'
L36	N 47° 03' 00" E	177.58'
L37	N 67° 41' 30" E	21.19'
L38	S 67° 41' 30" E	33.70'
L39	N 60° 02' 22" E	35.81'
L40	N 30° 23' 20" E	46.53'
L41	N 30° 23' 20" E	178.46'
L42	N 31° 11' 17" E	84.21'
L43	S 89° 23' 17" E	30.00'
L44	S 89° 23' 17" E	61.80'
L45	S 89° 23' 17" E	62.50'
L46	N 47° 03' 00" E	67.54'
L47	N 67° 41' 30" E	42.10'
L48	N 17° 12' 40" E	80.08'
L49	N 17° 12' 40" E	58.53'
L50	S 89° 23' 17" E	30.53'
L51	N 30° 23' 20" E	13.58'
L52	S 67° 41' 30" E	14.67'
L53	N 15° 00' 00" E	16.60'
L54	S 12° 11' 14" E	32.77'
L55	S 21° 12' 15" W	84.32'
L56	S 30° 04' 00" E	144.54'
L57	S 28° 11' 30" E	130.17'
L58	S 37° 12' 30" E	144.34'
L59	S 54° 47' 30" W	82.77'
L60	S 47° 10' 17" E	219.28'
L61	S 30° 23' 20" E	58.59'
L62	S 47° 10' 17" E	38.39'
L63	S 67° 41' 30" E	40.39'
L64	S 47° 10' 17" E	32.50'
L65	S 47° 10' 17" E	30.63'
L66	S 67° 41' 30" E	71.00'
L67	S 47° 10' 17" E	103.00'
L68	S 30° 23' 20" E	80.50'
L69	N 20° 12' 30" E	43.81'
L70	S 47° 10' 17" E	60.37'
L71	N 84° 00' 00" W	86.51'

CURVE TABLE

NO	RADIUS	DELTA	CHORD	CHORD BEARING	ARC
41	120.00'	203° 11' 4"	44.80'	N 27° 29' 17" E	44.84'
42	113.28'	202° 00' 0"	36.41'	N 25° 54' 15" E	36.85'
43	149.53'	210° 10' 10"	34.83'	S 33° 30' 37" E	35.14'
44	170.00'	175° 20' 0"	51.01'	S 25° 50' 41" E	51.28'
45	440.50'	169° 20' 0"	215.55'	N 40° 37' 00" E	217.57'
46	200.44'	75° 10' 0"	105.40' E	N 65° 40' 15" E	75.91'
47	121.08'	97° 40' 17"	1.80'	S 36° 30' 46" E	3.90'

SPRING CREEK UNIT 2  
 (P.L.B. 1817, PAGE 1102)

SPRING CREEK VILLAGE UNIT 3  
 (PLAT BOOK 29, PAGE 129)

25' UTILITY EASEMENT  
 O.R. 2222, P. 2447-2450  
 O.R. 2226, P. 3023-3028

