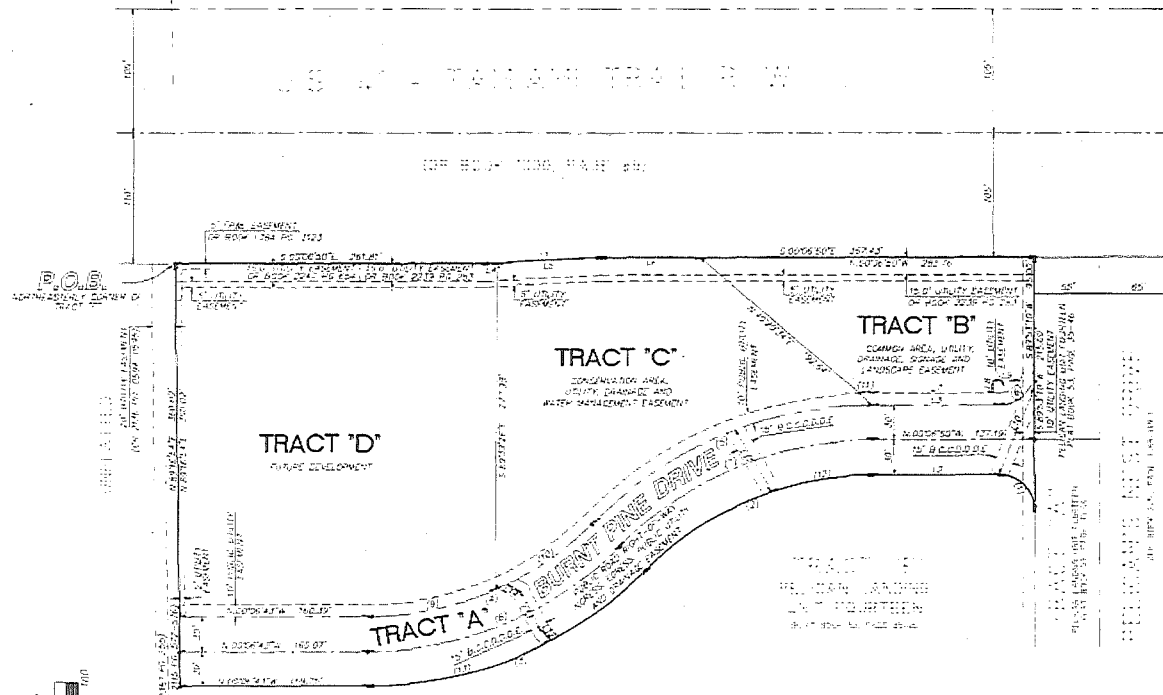


PELICAN LANDING UNIT TWENTY ONE

A REPLAT OF A PORTION OF TRACT "F", PELICAN LANDING, UNIT FOURTEEN,
PLAT BOOK 53 AT PAGES 35 THROUGH 46. A SUBDIVISION
LOCATED IN SECTION 21 TOWNSHIP 47 SOUTH, RANGE 25 EAST,
LEE COUNTY, FLORIDA

SECTION 16
SECTION 21



LINE TABLE

Line	Bearing	Distance
1	S 89° 12' 48" E	100.00
2	S 89° 12' 48" E	100.00
3	S 89° 12' 48" E	100.00
4	S 89° 12' 48" E	100.00
5	S 89° 12' 48" E	100.00
6	S 89° 12' 48" E	100.00
7	S 89° 12' 48" E	100.00
8	S 89° 12' 48" E	100.00
9	S 89° 12' 48" E	100.00
10	S 89° 12' 48" E	100.00
11	S 89° 12' 48" E	100.00
12	S 89° 12' 48" E	100.00
13	S 89° 12' 48" E	100.00
14	S 89° 12' 48" E	100.00
15	S 89° 12' 48" E	100.00
16	S 89° 12' 48" E	100.00
17	S 89° 12' 48" E	100.00
18	S 89° 12' 48" E	100.00
19	S 89° 12' 48" E	100.00
20	S 89° 12' 48" E	100.00
21	S 89° 12' 48" E	100.00
22	S 89° 12' 48" E	100.00
23	S 89° 12' 48" E	100.00
24	S 89° 12' 48" E	100.00
25	S 89° 12' 48" E	100.00
26	S 89° 12' 48" E	100.00
27	S 89° 12' 48" E	100.00
28	S 89° 12' 48" E	100.00
29	S 89° 12' 48" E	100.00
30	S 89° 12' 48" E	100.00
31	S 89° 12' 48" E	100.00
32	S 89° 12' 48" E	100.00
33	S 89° 12' 48" E	100.00
34	S 89° 12' 48" E	100.00
35	S 89° 12' 48" E	100.00
36	S 89° 12' 48" E	100.00
37	S 89° 12' 48" E	100.00
38	S 89° 12' 48" E	100.00
39	S 89° 12' 48" E	100.00
40	S 89° 12' 48" E	100.00
41	S 89° 12' 48" E	100.00
42	S 89° 12' 48" E	100.00
43	S 89° 12' 48" E	100.00
44	S 89° 12' 48" E	100.00
45	S 89° 12' 48" E	100.00
46	S 89° 12' 48" E	100.00
47	S 89° 12' 48" E	100.00
48	S 89° 12' 48" E	100.00
49	S 89° 12' 48" E	100.00
50	S 89° 12' 48" E	100.00
51	S 89° 12' 48" E	100.00
52	S 89° 12' 48" E	100.00
53	S 89° 12' 48" E	100.00
54	S 89° 12' 48" E	100.00
55	S 89° 12' 48" E	100.00
56	S 89° 12' 48" E	100.00
57	S 89° 12' 48" E	100.00
58	S 89° 12' 48" E	100.00
59	S 89° 12' 48" E	100.00
60	S 89° 12' 48" E	100.00
61	S 89° 12' 48" E	100.00
62	S 89° 12' 48" E	100.00
63	S 89° 12' 48" E	100.00
64	S 89° 12' 48" E	100.00
65	S 89° 12' 48" E	100.00
66	S 89° 12' 48" E	100.00
67	S 89° 12' 48" E	100.00
68	S 89° 12' 48" E	100.00
69	S 89° 12' 48" E	100.00
70	S 89° 12' 48" E	100.00
71	S 89° 12' 48" E	100.00
72	S 89° 12' 48" E	100.00
73	S 89° 12' 48" E	100.00
74	S 89° 12' 48" E	100.00
75	S 89° 12' 48" E	100.00
76	S 89° 12' 48" E	100.00
77	S 89° 12' 48" E	100.00
78	S 89° 12' 48" E	100.00
79	S 89° 12' 48" E	100.00
80	S 89° 12' 48" E	100.00
81	S 89° 12' 48" E	100.00
82	S 89° 12' 48" E	100.00
83	S 89° 12' 48" E	100.00
84	S 89° 12' 48" E	100.00
85	S 89° 12' 48" E	100.00
86	S 89° 12' 48" E	100.00
87	S 89° 12' 48" E	100.00
88	S 89° 12' 48" E	100.00
89	S 89° 12' 48" E	100.00
90	S 89° 12' 48" E	100.00
91	S 89° 12' 48" E	100.00
92	S 89° 12' 48" E	100.00
93	S 89° 12' 48" E	100.00
94	S 89° 12' 48" E	100.00
95	S 89° 12' 48" E	100.00
96	S 89° 12' 48" E	100.00
97	S 89° 12' 48" E	100.00
98	S 89° 12' 48" E	100.00
99	S 89° 12' 48" E	100.00
100	S 89° 12' 48" E	100.00

CURVE TABLE

Station	Chord Bearing	Chord Length	Curve Data
101	S 89° 12' 48" E	100.00	...
102	S 89° 12' 48" E	100.00	...
103	S 89° 12' 48" E	100.00	...
104	S 89° 12' 48" E	100.00	...
105	S 89° 12' 48" E	100.00	...
106	S 89° 12' 48" E	100.00	...
107	S 89° 12' 48" E	100.00	...
108	S 89° 12' 48" E	100.00	...
109	S 89° 12' 48" E	100.00	...
110	S 89° 12' 48" E	100.00	...
111	S 89° 12' 48" E	100.00	...
112	S 89° 12' 48" E	100.00	...
113	S 89° 12' 48" E	100.00	...
114	S 89° 12' 48" E	100.00	...
115	S 89° 12' 48" E	100.00	...
116	S 89° 12' 48" E	100.00	...
117	S 89° 12' 48" E	100.00	...
118	S 89° 12' 48" E	100.00	...
119	S 89° 12' 48" E	100.00	...
120	S 89° 12' 48" E	100.00	...

TRACT ACREAGE TABLE

TRACT	ACREAGE
TRACT A	1.074
TRACT B	0.997
TRACT C	1.124
TRACT D	1.826
TOTAL	4.821

DETAIL
(ACCESSORY INFORMATION)

PART OF
PELICAN LANDING
UNIT FOURTEEN
IN SECTION 21

D.O. # 95-04-253.000