

PELICAN LANDING UNIT NINETEEN

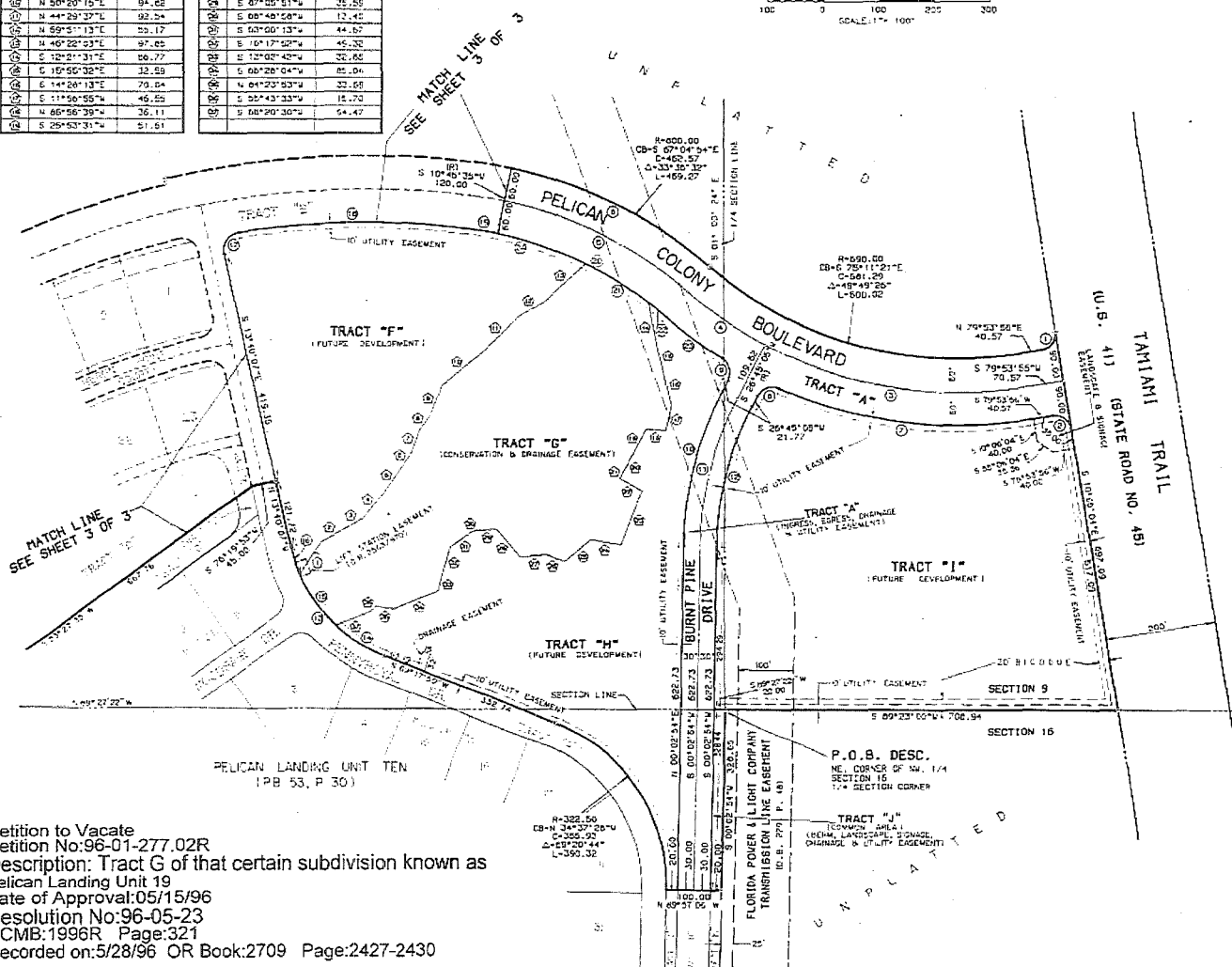
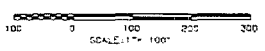
A SUBDIVISION IN
 SECTIONS 9, 16 AND 17, TOWNSHIP 47 SOUTH, RANGE 25 EAST
 LEE COUNTY, FLORIDA

LINE DATA

LINE NO.	BEARING	DISTANCE
1	N 33° 53' 11" E	69.34
2	N 50° 11' 56" E	62.30
3	N 60° 28' 17" E	35.29
4	N 30° 01' 13" E	63.26
5	N 33° 49' 55" E	51.57
6	N 36° 01' 25" E	31.94
7	N 10° 03' 14" E	43.81
8	N 36° 31' 56" E	27.82
9	N 21° 23' 12" E	62.05
10	N 50° 20' 15" E	94.02
11	N 44° 23' 37" E	92.24
12	N 59° 57' 13" E	55.17
13	N 40° 22' 03" E	97.05
14	S 12° 21' 31" E	56.77
15	S 15° 55' 32" E	32.53
16	S 14° 28' 13" E	79.84
17	S 11° 58' 55" E	46.55
18	N 65° 56' 39" E	36.11
19	S 25° 53' 31" E	51.81

LINE DATA

LINE NO.	BEARING	DISTANCE
20	S 30° 58' 35" W	36.27
21	S 22° 58' 17" W	13.00
22	S 61° 19' 57" E	45.00
23	S 20° 45' 25" W	105.50
24	N 81° 46' 31" E	25.51
25	S 40° 00' 50" W	51.47
26	N 68° 12' 52" W	35.30
27	S 03° 08' 23" W	46.47
28	N 40° 50' 04" W	62.58
29	S 07° 05' 51" W	35.55
30	S 00° 48' 50" W	12.45
31	S 63° 00' 13" W	44.67
32	S 16° 17' 52" W	45.32
33	S 12° 02' 42" W	52.60
34	S 00° 28' 04" W	85.04
35	N 04° 23' 53" W	32.68
36	S 32° 43' 33" W	16.73
37	S 08° 20' 30" W	54.47



CURVE DATA

CHORD	RADIUS	LENGTH	TANGENT	CHORD BEARING	CHORD DIST.
30° 00' 00"	30.00	47.12	30.00	N 34° 33' 56" E	42.43
50° 00' 00"	30.00	47.12	30.00	N 53° 05' 04" W	42.43
30° 51' 10"	750.00	423.40	243.87	N 81° 40' 30" W	474.13
12° 58' 17"	750.00	158.78	85.26	N 56° 45' 46" W	158.43
20° 50' 47"	740.00	374.57	191.12	N 64° 40' 32" W	370.10
28° 50' 47"	650.00	424.40	235.62	S 64° 40' 32" E	400.11
32° 45' 24"	910.00	463.09	230.56	N 63° 43' 02" W	456.80
85° 54' 14"	30.00	44.58	27.93	S 69° 40' 12" W	40.58
85° 54' 14"	30.00	44.58	27.93	N 16° 12' 02" W	40.58
26° 42' 12"	630.00	293.52	149.52	N 13° 23' 59" E	290.97
26° 42' 12"	630.00	279.24	142.40	S 13° 23' 59" W	277.11
26° 42' 12"	570.00	265.25	136.28	S 13° 23' 59" W	263.26
23° 25' 15"	272.50	269.43	145.40	N 41° 20' 59" W	255.37
21° 25' 58"	272.50	163.61	82.92	N 58° 54' 51" W	103.20
23° 25' 15"	272.50	113.43	57.52	N 30° 59' 14" W	112.65
10° 45' 30"	272.50	82.19	26.17	N 10° 23' 22" W	52.11
93° 40' 30"	30.00	49.07	32.61	S 33° 11' 11" W	43.78
10° 04' 21"	1492.50	416.67	210.72	N 60° 04' 40" E	417.30
4° 38' 44"	680.00	55.14	27.50	S 81° 23' 47" E	55.12
28° 57' 47"	680.00	343.74	175.63	S 64° 45' 32" E	340.69
11° 13' 40"	680.00	133.26	66.05	S 59° 26' 13" E	133.07
3° 32' 41"	680.00	42.67	21.04	S 52° 02' 50" E	42.06
0° 52' 31"	810.00	125.47	62.66	N 54° 42' 53" W	126.32
10° 50' 05"	680.00	225.53	112.78	S 74° 28' 28" E	222.52

LOT AREA / TRACT USE AND AREA TABLE

LOT #	AREA SQ. FT.	ACRES	LOT #	AREA SQ. FT.	ACRES
1	21224.82	4.86	13	6092.86	0.14
2	21224.82	4.86	14	24957.01	0.57
3	21224.82	4.86	15	22414.86	0.51
4	21224.82	4.86	16	21224.82	0.49
5	21224.82	4.86	17	21224.82	0.49
6	21224.82	4.86	18	21224.82	0.49
7	21224.82	4.86	19	21224.82	0.49
8	21224.82	4.86	20	21224.82	0.49
9	21224.82	4.86	21	21224.82	0.49
10	21224.82	4.86	22	22227.33	0.51
TOTAL LOTS - 225,737.51 SQ. FT. (12.06 AC.)					

TRACT	AREA SQ. FT.	ACRES	USE
A	189472.06	4.30	PUBLIC ROAD RIGHT-OF-WAY, INGRESS, EGRESS, UTILITY AND DRAINAGE EASEMENT
B	388352.36	8.85	PRIVATE ROAD RIGHT-OF-WAY, INGRESS, EGRESS, UTILITY AND DRAINAGE EASEMENT
C	9125.95	0.12	GREEN AREA, BERT, LANDSCAPE, EGRESS, UTILITY AND DRAINAGE EASEMENT
D	21900.89	0.05	LANDSCAPE MANAGEMENT AND DRAINAGE EASEMENT
E	3265.90	0.00	GREEN AREA, LANDSCAPE, SIGNAGE, UTILITY AND DRAINAGE EASEMENT
F	212942.48	4.86	FUTURE DEVELOPMENT TRACT
G	289490.21	4.30	CONDENSATION AND DRAINAGE EASEMENT
H	211360.00	4.85	FUTURE DEVELOPMENT TRACT
I	262180.00	6.00	FUTURE DEVELOPMENT TRACT
J	2275.84	0.10	GREEN AREA, BERT, LANDSCAPE, EGRESS, UTILITY AND DRAINAGE EASEMENT
TOTAL TRACTS - 41.40 AC.			
GRAND TOTAL - 53.46 AC.			

Petition to Vacate
 Petition No:96-01-277.02R
 Description: Tract G of that certain subdivision known as Pelican Landing Unit 19
 Date of Approval:05/15/96
 Resolution No:96-05-23
 CCMB:1996R Page:321
 Recorded on:5/28/96 OR Book:2709 Page:2427-2430

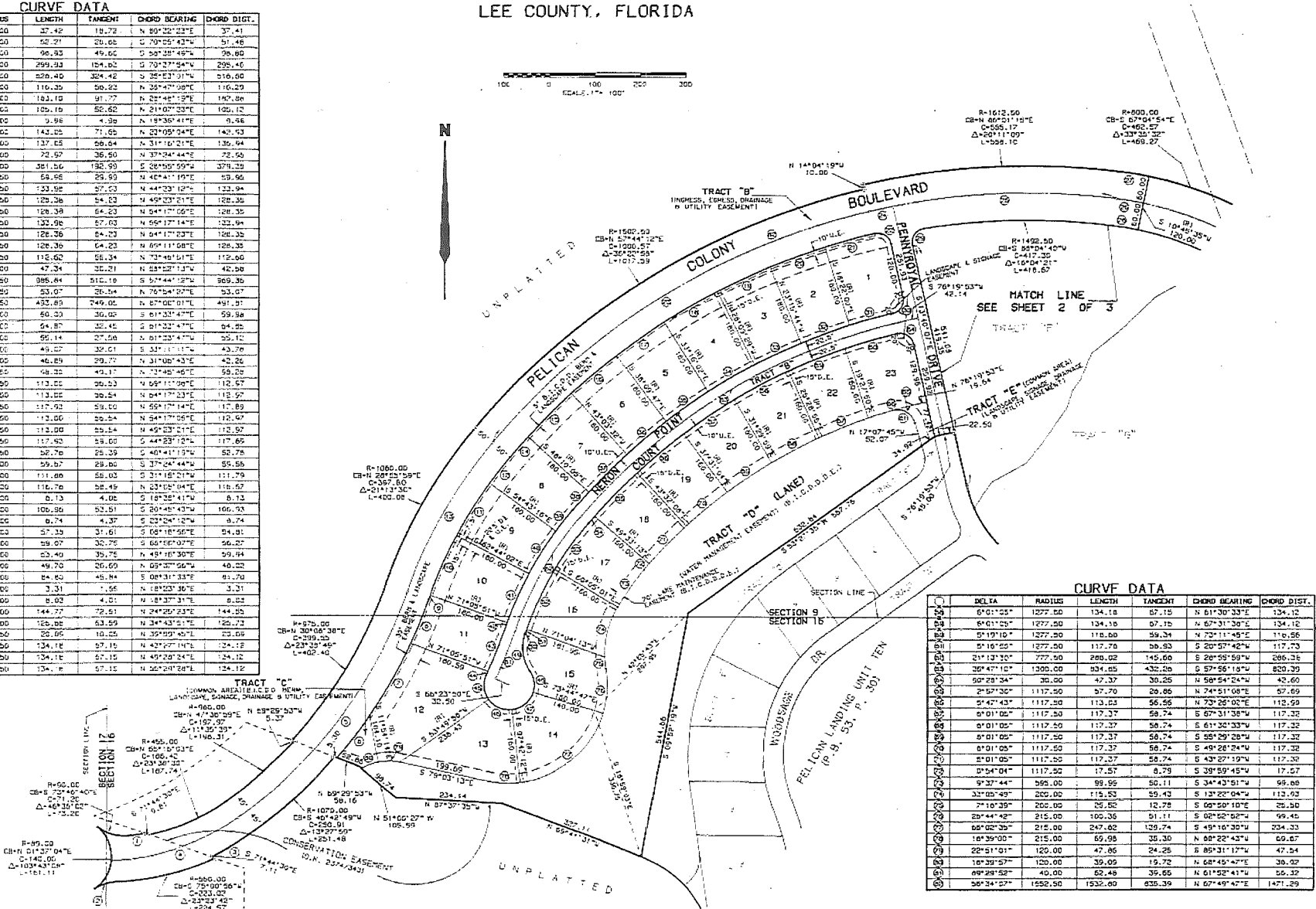
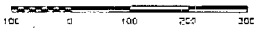
PELICAN LANDING UNIT NINETEEN

SHEET 3 OF 3

A SUBDIVISION IN
SECTIONS 9, 16 AND 17, TOWNSHIP 47 SOUTH, RANGE 25 EAST
LEE COUNTY, FLORIDA

CURVE DATA

STATION	DELTA	RADIUS	LENGTH	TANGENT	CHORD BEARING	CHORD DIST.
1	4°45'52"	450.00	37.42	18.72	N 89°10'23"E	37.41
2	33°41'06"	90.00	62.21	26.65	S 70°55'43"W	51.48
3	10°24'02"	649.00	96.33	49.62	S 58°28'45"W	98.60
4	34°22'11"	630.00	299.93	154.82	S 70°27'54"W	298.46
5	35°07'34"	1075.00	626.40	324.42	S 35°23'31"W	516.60
6	5°12'02"	875.00	116.35	58.22	N 25°47'08"E	116.29
7	5°45'33"	1075.00	183.10	91.77	N 25°48'12"E	182.88
8	5°36'18"	1075.00	185.19	92.62	N 24°57'23"E	185.12
9	1°34'55"	982.00	3.96	4.39	N 89°58'41"E	4.56
10	8°21'49"	982.00	143.02	71.65	N 23°05'54"E	142.53
11	8°00'40"	982.00	137.85	68.54	N 31°16'21"E	136.94
12	4°12'58"	825.00	72.67	36.50	N 37°24'44"E	72.50
13	21°13'30"	1032.00	381.56	192.90	E 28°59'59"W	374.33
14	2°17'12"	1562.00	64.56	29.59	N 42°41'10"E	63.95
15	5°06'33"	1262.00	133.98	67.23	N 44°23'12"E	133.94
16	4°53'45"	1502.00	128.36	64.23	N 45°23'21"E	128.35
17	4°53'45"	1502.00	128.36	64.23	N 54°17'05"E	128.35
18	5°26'33"	1502.00	132.98	67.63	N 56°17'14"E	132.94
19	4°13'42"	1502.00	128.36	64.23	N 64°17'03"E	128.35
20	4°29'49"	1502.00	128.36	64.23	N 65°11'08"E	128.35
21	4°17'41"	1502.00	118.60	58.34	N 73°49'51"E	117.60
22	3°24'12"	30.00	47.34	23.21	N 83°23'13"W	42.38
23	25°27'58"	1552.00	395.44	212.19	S 57°44'12"W	389.35
24	1°57'21"	1552.00	53.07	26.54	N 75°54'22"E	53.07
25	18°12'39"	1652.00	432.85	249.02	N 67°06'01"W	491.31
26	4°36'44"	740.00	60.23	30.42	S 61°33'42"E	59.58
27	4°36'44"	862.00	64.87	32.45	S 61°33'47"E	64.85
28	4°36'44"	862.00	66.14	32.58	S 61°33'47"E	66.12
29	92°42'35"	35.00	48.07	30.61	S 31°11'11"W	43.78
30	65°37'40"	35.00	46.84	29.77	N 31°05'43"E	42.82
31	4°15'32"	1302.00	98.22	49.17	N 72°45'45"E	98.22
32	4°23'45"	1302.00	113.85	56.53	N 65°17'39"E	112.57
33	4°52'45"	1302.00	113.85	56.54	N 64°17'23"E	112.57
34	5°26'33"	1376.00	117.92	59.00	N 65°17'14"E	117.89
35	4°23'45"	1376.00	113.85	56.54	N 54°17'05"E	112.57
36	4°23'45"	1376.00	113.85	56.54	N 45°23'21"E	112.57
37	5°26'33"	1376.00	117.92	59.00	S 44°23'12"E	117.89
38	2°17'12"	1376.00	58.76	28.39	S 40°41'13"W	58.78
39	4°15'58"	800.00	59.87	29.82	S 37°24'44"W	59.55
40	8°29'45"	890.00	711.89	358.03	S 31°16'21"W	711.79
41	3°21'49"	630.00	116.76	58.49	N 23°15'04"E	116.67
42	8°34'56"	630.00	80.13	4.02	S 18°28'41"W	80.13
43	4°53'00"	1290.00	108.96	53.51	S 20°45'43"W	106.53
44	8°23'07"	1290.00	80.74	4.37	S 23°24'12"W	80.74
45	59°46'13"	50.00	57.35	31.61	S 08°18'56"E	54.81
46	61°32'10"	50.00	59.07	32.78	S 68°16'07"E	56.27
47	65°02'35"	50.00	63.60	35.75	N 43°10'30"E	59.94
48	51°46'18"	50.00	49.70	26.60	N 55°27'56"W	48.22
49	53°25'04"	50.00	64.85	48.94	S 08°31'33"E	61.70
50	7°08'42"	1302.00	3.31	1.56	N 82°33'30"E	3.31
51	6°36'33"	750.00	80.82	4.20	N 28°37'31"E	80.82
52	10°09'12"	750.00	144.77	72.51	N 24°59'23"E	144.55
53	5°37'44"	750.00	166.98	83.59	N 24°43'21"E	162.72
54	0°54'04"	1277.50	28.05	10.25	N 35°09'40"E	23.09
55	6°21'02"	1277.50	134.16	57.15	N 42°27'14"E	134.12
56	6°21'02"	1277.50	134.16	57.15	N 49°29'24"E	134.12
57	6°21'02"	1277.50	134.16	57.15	N 52°24'28"E	134.12



CURVE DATA

STATION	DELTA	RADIUS	LENGTH	TANGENT	CHORD BEARING	CHORD DIST.
58	6°01'55"	1277.50	134.16	57.15	N 61°30'33"E	134.12
59	6°01'55"	1277.50	134.16	57.15	N 73°11'30"E	134.12
60	5°19'10"	1277.50	118.60	59.34	N 73°11'30"E	116.56
61	5°18'52"	1277.50	117.76	58.93	S 20°57'42"W	117.73
62	21°13'30"	772.50	280.02	145.60	S 28°59'59"W	280.35
63	26°47'16"	1300.00	334.05	432.25	S 57°56'19"W	820.39
64	50°28'34"	30.00	47.37	30.25	N 58°54'24"W	42.60
65	2°57'35"	1117.50	57.70	26.86	N 74°51'08"E	57.69
66	9°47'43"	1117.50	113.85	56.55	N 73°26'02"E	113.59
67	8°01'02"	1117.50	117.37	58.74	S 67°31'38"W	117.32
68	8°01'02"	1117.50	117.37	58.74	S 61°32'33"W	117.32
69	8°01'02"	1117.50	117.37	58.74	S 55°29'29"W	117.32
70	8°01'02"	1117.50	117.37	58.74	S 49°26'24"W	117.32
71	5°01'05"	1117.50	117.37	58.74	S 43°27'19"W	117.30
72	0°54'04"	1117.50	17.57	6.79	S 39°59'45"W	17.57
73	9°37'44"	595.00	99.95	50.11	S 34°43'51"W	99.88
74	32°05'49"	200.00	115.53	59.43	S 13°28'04"W	113.92
75	7°16'39"	200.00	25.52	12.78	S 09°50'10"E	25.50
76	28°44'42"	215.00	100.35	51.11	S 02°52'02"W	99.45
77	68°02'35"	215.00	247.62	139.74	S 49°16'30"W	234.33
78	18°39'00"	215.00	69.98	35.30	N 68°22'43"W	69.67
79	22°51'19"	120.00	47.86	24.25	S 89°31'17"W	47.34
80	18°39'57"	120.00	39.09	19.72	N 68°45'47"E	38.39
81	49°28'52"	40.00	62.45	39.65	N 61°52'41"W	55.32
82	36°34'27"	1552.00	1532.80	838.39	N 67°49'47"E	1471.29