

PELICAN LANDING UNIT NINE

PLAT BOOK 49 PL. 79

NOTICE:
LANDS DESCRIBED IN THIS PLAT ARE SUB-DIVIDED BY THE DEVELOPER WITHOUT THE ROADS, DRAINAGE AND SEWER FACILITIES BEING ACCEPTED BY LEE COUNTY. ANY PURCHASER OF A LOT IN THIS SUBDIVISION IS ADVISED THAT HE MAY BE SUBJECT TO ASSESSMENT OR CALLED UPON TO BEAR A PORTION OF OR ALL OF THE EXPENSE OF CONSTRUCTION, MAINTENANCE OR IMPROVEMENT OF ROADS, DRAINAGE AND SEWER FACILITIES WITHIN THE SUBDIVISION.

A SUBDIVISION OF PART OF SECTION 16, TOWNSHIP 47 SOUTH, RANGE 25 EAST AND A REPLAT OF LOT 1 BLOCK C OF THE PLAT OF PELICAN LANDING UNIT FOUR PLAT BOOK 49 PAGES 1 - 4 LEE COUNTY, FLORIDA

PREPARED BY:
POST, BUCKLEY, SCHUH & JERNIGAN, INC.
6326 PRESIDENTIAL COURT S.W.
FT. MYERS, FL 33919 (813) 482-7275

DEDICATION

KNOW ALL MEN BY THESE PRESENTS THAT WESTINGHOUSE BAYSIDE COMMUNITIES, INC., A CORPORATION UNDER THE LAWS OF THE STATE OF FLORIDA, OWNER OF THE LANDS DESCRIBED HEREIN HAS CAUSED THIS PLAT OF PELICAN LANDING UNIT NINE, A SUB-DIVISION OF PART OF SECTION 16, TOWNSHIP 47 SOUTH, RANGE 25 EAST AND A REPLAT OF LOT 1 BLOCK C OF THE PLAT OF PELICAN LANDING UNIT FOUR, PLAT BOOK 49 PAGES 1 THROUGH 4, LEE COUNTY, FLORIDA TO BE MADE HEREBY REVOKING, VACATING AND REGRANTING ANY PLAT OR PLATS OF ANY PART OF SAID LANDS HERETOFORE MADE AND DOES HEREBY MAKE THE FOLLOWING DEDICATIONS:

THE ROAD RIGHTS-OF-WAY OF LAKEHANT DRIVE AND THIMBERY COURT (HEREINAFTER COLLECTIVELY REFERRED TO AS TRACT "A"), TRACTS "B" AND "C" TO THE PELICAN LANDING COMMUNITY ASSOCIATION, HAS A HOY FOR FROM THE SAID CORPORATION FOR THE BENEFIT OF ITS PRESENT AND FUTURE MEMBERS, ITS SUCCESSORS AND ITS ASSIGNS, AND THEIR TENANTS, INVITEES, LICENSEES, MORTGAGEES, AND EMPLOYEES, RESERVING UNTO WESTINGHOUSE BAYSIDE COMMUNITIES, INC., ITS SUCCESSORS, ITS ASSIGNS, EMPLOYEES AND INVITEES A PERPETUAL RIGHT FOR INGRESS AND EGRESS ON AND OVER SAID TRACT "A"

LAKE MAINTENANCE AND DRAINAGE EASEMENTS SHOWN HEREON AND TRACTS "C", "D", "F" AND "G" ARE HEREBY GRANTED TO THE BAYSIDE IMPROVEMENT COMMUNITY DEVELOPMENT DISTRICT

AN EASEMENT FOR DRAINAGE AND UTILITY PURPOSES ON, OVER AND UNDER TRACT "A" IS HEREBY GRANTED TO THE BAYSIDE IMPROVEMENT COMMUNITY DEVELOPMENT DISTRICT AND OTHER PUBLIC UTILITIES.

ALL UTILITY EASEMENTS SHOWN HEREON ARE FOR PURPOSES OF INSTALLATION, REPAIR AND MAINTENANCE OF WATER, SEWER, ELECTRIC, TELEPHONE AND CABLE TELEVISION AND ARE HEREBY GRANTED TO B.I.C.D. AND PUBLIC UTILITIES HAVING THE AUTHORITY TO PROVIDE FOR SUCH SERVICES.

IN WITNESS WHEREOF, WESTINGHOUSE BAYSIDE COMMUNITIES, INC. HAS CAUSED THESE PRESENTS TO BE MADE AND SIGNED IN ITS NAME BY ITS EXECUTIVE VICE-PRESIDENT, ITS CORPORATE SEAL AFFIXED, AND ATTESTED TO BY ITS SECRETARY THIS 12th DAY OF MAY A.D. 1982.

WESTINGHOUSE BAYSIDE COMMUNITIES, INC.

Suberman Budd

WITNESS AS TO BOTH

Lucy Blaine

WITNESS AS TO BOTH

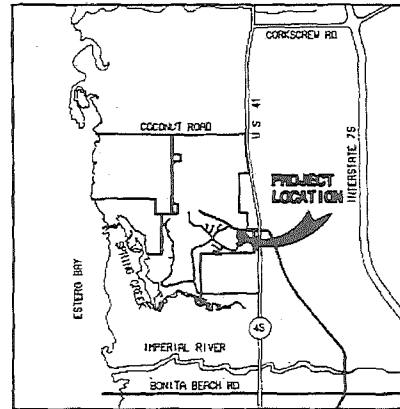
SMUEL L. CROUCH, EXECUTIVE VICE-PRESIDENT

SM

ROBERT W. McCLURE, SECRETARY

Robert W. McClure

WITNESS AS TO BOTH



LOCATION MAP

NOT TO SCALE

APPROVALS

THIS PLAT WAS ACCEPTED THIS 15th DAY OF JULY A.D. 1982 IN AN OPEN MEETING OF THE BOARD OF COUNTY COMMISSIONERS OF LEE COUNTY, FLORIDA

Paul J. Bangs
CHAIRMAN OF THE BOARD

Charlie Green
CLERK OF COURT CHARLIE GREEN

Paul J. Bangs
COUNTY ATTORNEY

Mary Gibbs
DIRECTOR, DEPARTMENT OF COMMUNITY DEVELOPMENT MARY GIBBS

Paul J. Bangs
DIRECTOR, DIVISION OF DEVELOPMENT REVIEW PAUL J. BANGS

CERTIFICATION

323 1335

I HEREBY CERTIFY THAT THIS PLAT OF PELICAN LANDING UNIT NINE AND A REPLAT OF LOT 1, BLOCK C, PELICAN LANDING UNIT FOUR, PLAT BOOK 49, PAGES 1 - 4 HAS BEEN EXAMINED BY ME AND FROM MY EXAMINATION I FIND THAT SAID PLAT COMPLIES WITH THE REQUIREMENTS OF CHAPTER 177 OF THE FLORIDA STATUTES. I FURTHER CERTIFY THAT SAID PLAT WAS FILED FOR RECORD ON THIS 12th DAY OF MAY A.D. 1982, AND JULY RECORDED IN PLAT BOOK 49 AT PAGES 79 THROUGH 102 OF THE PUBLIC RECORDS OF LEE COUNTY, FLORIDA.

Charlie Green
CLERK OF THE CIRCUIT COURT IN AND FOR LEE COUNTY, FLORIDA
CHARLIE GREEN

BAYSIDE IMPROVEMENT COMMUNITY DEVELOPMENT DISTRICT

THIS PLAT APPROVED IN OPEN MEETING OF THE BAYSIDE IMPROVEMENT COMMUNITY DEVELOPMENT DISTRICT THIS 20th DAY OF MAY A.D. 1982 THE DISTRICT HEREBY ACKNOWLEDGES ACCEPTANCE OF DRAINAGE EASEMENTS AND DRAINAGE OF ALL LANDS CONTAINED WITHIN THIS PLAT

Frederick T. Barber III
WITNESS FREDERICK T. BARBER III, CHAIRMAN BAYSIDE IMPROVEMENT COMMUNITY DEVELOPMENT DISTRICT

Gary L. Pomeroy
WITNESS GARY L. POMEROY, SECRETARY BAYSIDE IMPROVEMENT COMMUNITY DEVELOPMENT DISTRICT

NOTES:

- BEARINGS SHOWN HEREON ARE BASED ON THE WEST LINE OF THE NW 1/4 OF SECTION 16, T. 47 S., R. 25 E. AS N 00°41'04" W.
- ALL DIMENSIONS ARE IN FEET AND DECIMALS THEREOF
- ALL CURVES INDICATED ARE CIRCULAR.
- CA DENOTES A CURVE NUMBER REFERENCED TO A CURVE DATA TABLE.
- DENOTES A PERMANENT REFERENCE MONUMENT (P.R.M.): A 4"x4" TRIPLEX CONCRETE MONUMENT WITH METAL DISK BEARING THE SURVEYOR'S CERTIFICATE NUMBER 3875 (UNLESS OTHERWISE INDICATED).
- DENOTES FOUND P.R.M. BEARING THE SURVEYOR'S CERTIFICATE NUMBER 3875 (UNLESS OTHERWISE INDICATED).
- ⊙ DENOTES PERMANENT CONTROL POINT (P.C.P.): A 3/8" NAIL WITH METAL DISK BEARING THE SURVEYOR'S CERTIFICATE NUMBER 3875 (UNLESS OTHERWISE INDICATED).
- DENOTES PERMANENT CONTROL POINT (P.C.P.) THAT HAS NOT BEEN SET UPON COMPLETION OF THE ROAD CONSTRUCTION. THESE P.C.P.'S SHALL BE INSTALLED IN ACCORDANCE WITH PART 1 OF CHAPTER 177, FLORIDA STATUTES.
- D E INDICATES DRAINAGE EASEMENT
- U E INDICATES UTILITY EASEMENT
- B.I.C.D.D.E. INDICATES BAYSIDE IMPROVEMENT COMMUNITY DEVELOPMENT DISTRICT DRAINAGE EASEMENT
- B.I.C.D.D.U.E. INDICATES BAYSIDE IMPROVEMENT COMMUNITY DEVELOPMENT DISTRICT UTILITY EASEMENT
- A 6.00 FOOT UTILITY EASEMENT IS RESERVED ALONG THE SIDE AND REAR LINES AND A 10.00 FOOT UTILITY EASEMENT IS RESERVED ALONG THE FRONT LINES OF EACH LOT AND TRACT "B" SEE PLAT FOR ADDITIONAL EASEMENTS
- B.I.C.D.D. INDICATES BAYSIDE IMPROVEMENT COMMUNITY DEVELOPMENT DISTRICT.

NOTICE: THERE MAY BE ADDITIONAL RESTRICTIONS THAT ARE NOT RECORDED ON THIS PLAT THAT MAY BE FOUND IN THE PUBLIC RECORDS OF THIS COUNTY

SURVEYOR'S CERTIFICATION

I HEREBY CERTIFY THAT THE ATTACHED PLAT OF PELICAN LANDING UNIT NINE AND A REPLAT OF LOT 1 BLOCK C OF THE PLAT OF PELICAN LANDING UNIT FOUR IS A TRUE AND CORRECT REPRESENTATION OF THE HEREIN DESCRIBED LAND ACCORDING TO A RECENT SURVEY MADE AND PLATTED UNDER MY DIRECTION AND SUPERVISION AND THAT THE SURVEY DATA COMPLIES WITH ALL THE REQUIREMENTS OF PART 1 OF CHAPTER 177, FLORIDA STATUTES. I FURTHER CERTIFY THAT THE PERMANENT REFERENCE MONUMENTS (PRM) HAD BEEN PLACED AT THE LOCATIONS SHOWN ON THE PLAT.

Robert W. McClure
ROBERT W. McCLURE, PROFESSIONAL LAND SURVEYOR
FLORIDA LICENSE NO. 3875

ACKNOWLEDGEMENT

STATE OF FLORIDA, COUNTY OF LEE

THE FOREGOING INSTRUMENT WAS ACKNOWLEDGED BEFORE ME THIS 12th DAY OF MAY A.D. 1982 BY SAMUEL L. CROUCH, EXECUTIVE VICE-PRESIDENT AND ROBERT W. McCLURE, SECRETARY OF WESTINGHOUSE BAYSIDE COMMUNITIES, INC., A FLORIDA CORPORATION. ON BEHALF OF THE CORPORATION THEY ARE PERSONALLY KNOWN TO ME TO BE THE PERSONS DESCRIBED IN AND WHO EXECUTED THE FOREGOING DEDICATION AND THEY ACKNOWLEDGE THE EXECUTION THEREOF TO BE THEIR FREE ACT AND DEED AS SUCH OFFICERS FOR THE USES AND PURPOSES THEREIN MENTIONED AND THAT THEY AFFIXED THERETO THE OFFICIAL SEAL OF SAID CORPORATION AND THAT SAID DEDICATION IS THE ACT AND DEED OF SAID CORPORATION AND THEY SHO...

Suberman Budd
NOTARY PUBLIC - STATE OF FLORIDA

Suberman Budd
NAME

88707791
COMMISSION #

October 6, 1983
MY COMMISSION EXPIRES

PREPARED BY:

Post, Buckley, Schuh, & Jernigan, Inc.
 6326 PRESIDENTIAL COURT
 FORT MYERS, FL 33905

LEGAL DESCRIPTION #1
 PELICAN LANDING UNIT 9

A PARCEL OF LAND LYING IN SECTION 16, TOWNSHIP 47 SOUTH, RANGE 25 EAST, LEE COUNTY, FLORIDA, BEING MORE PARTICULARLY DESCRIBED AS FOLLOWS:

COMMENCE AT THE NORTHWEST CORNER OF THE SOUTHWEST ONE-QUARTER OF SAID SECTION 16; THENCE N00°41'04"W, ALONG THE WESTERLY BOUNDARY OF SAID NORTHWEST ONE-QUARTER OF SAID SECTION 16, A DISTANCE OF 125.48 FEET TO A POINT ON THE ARC OF A NON-TANGENT CIRCULAR CURVE CONCAVE TO THE NORTHEAST (A RADIAL LINE THROUGH SAID POINT BEARS N00°09'27"E); THENCE SOUTHEASTERLY ALONG THE ARC OF SAID CURVE HAVING FOR ITS ELEMENTS A RADIUS OF 1050.00 FEET, A CENTRAL ANGLE OF 20°49'20", A CHORD DISTANCE OF 379.49 FEET, A CHORD BEARING OF S60°15'13"E, AN ARC DISTANCE OF 381.59 FEET; THENCE S70°39'53"E, A DISTANCE OF 1059.20 FEET; THENCE SOUTHEASTERLY ALONG THE ARC OF A TANGENT CIRCULAR CURVE CONCAVE TO THE SOUTHWEST HAVING FOR ITS ELEMENTS A RADIUS OF 1630.00 FEET, A CENTRAL ANGLE OF 17°38'46", A CHORD DISTANCE OF 500.03 FEET, A CHORD BEARING OF S61°50'31"E, AN ARC DISTANCE OF 502.01; THENCE S53°01'08"E, A DISTANCE OF 330.91 FEET; THENCE SOUTHEASTERLY ALONG THE ARC OF A TANGENT CIRCULAR CURVE CONCAVE TO THE NORTHEAST, HAVING FOR ITS ELEMENTS A RADIUS OF 1460.00 FEET, A CENTRAL ANGLE OF 20°56'41", A CHORD DISTANCE OF 530.75 FEET; THENCE S63°29'28"E, AN ARC DISTANCE OF 533.71 FEET TO THE POINT OF BEGINNING SAID POINT ALSO BEING A POINT OF COMPOUND CURVATURE OF A TANGENT CIRCULAR CURVE CONCAVE TO THE NORTHEAST (A RADIAL LINE THROUGH SAID POINT BEARS N16°02'11"E); THENCE SOUTHEASTERLY ALONG THE ARC OF SAID CURVE HAVING FOR ITS ELEMENTS A RADIUS OF 1460.00 FEET, A CENTRAL ANGLE OF 16°55'28", A CHORD DISTANCE OF 429.70 FEET, A CHORD BEARING OF S82°25'33"E, AN ARC DISTANCE OF 431.26 FEET; THENCE N89°06'43"E, A DISTANCE OF 149.94 FEET; THENCE S00°06'43"E, A DISTANCE OF 103.37 FEET; THENCE S60°26'24"E, A DISTANCE OF 139.40 FEET; THENCE S32°18'58"W, A DISTANCE OF 65.44 FEET; THENCE S20°11'34"W, A DISTANCE OF 156.40 FEET; THENCE S28°29'57"W, A DISTANCE OF 28.47 FEET; THENCE S09°30'34"E, A DISTANCE OF 48.57 FEET; THENCE S19°40'19"E, A DISTANCE OF 54.03 FEET; THENCE S09°59'00"E, A DISTANCE OF 54.03 FEET; THENCE S14°00'59"E, A DISTANCE OF 41.82 FEET; THENCE S20°55'2"W, A DISTANCE OF 25.79 FEET; THENCE S39°05'43"W, A DISTANCE OF 66.13 FEET; THENCE S61°29'49"W, A DISTANCE OF 9.70 FEET; THENCE S85°20'33"W, A DISTANCE OF 109.01 FEET; THENCE N78°00'49"E, A DISTANCE OF 21.82 FEET; THENCE S25°31'10"W, A DISTANCE OF 43.23 FEET; THENCE N59°59'05"W, A DISTANCE OF 29.14 FEET; THENCE SOUTHWESTERLY ALONG THE ARC OF A TANGENT CIRCULAR CURVE CONCAVE TO THE SOUTHWEST, HAVING FOR ITS ELEMENTS A RADIUS OF 60.00 FEET, A CENTRAL ANGLE OF 97°33'30", A CHORD DISTANCE OF 86.00 FEET, A CHORD BEARING OF S74°15'07"W, AN ARC DISTANCE OF 88 FEET; THENCE S28°28'22"E, A DISTANCE OF 110.88 FEET; THENCE N76°31'09"W, A DISTANCE OF 207.05 FEET; THENCE S28°28'22"W, A DISTANCE OF 151.17 FEET; THENCE N61°31'38"W, A DISTANCE OF 155.00 FEET; THENCE N28°28'22"E, A DISTANCE OF 65.52 FEET; THENCE NORTHEASTERLY ALONG THE ARC OF A TANGENT CIRCULAR CURVE CONCAVE TO THE NORTHWEST HAVING FOR ITS ELEMENTS A RADIUS OF 93.00 FEET, A CENTRAL ANGLE OF 26°31'05", A CHORD DISTANCE OF 42.66 FEET; THENCE N09°18'20"W, A DISTANCE OF 393.75 FEET TO A POINT OF CUSP OF A TANGENT CIRCULAR CURVE CONCAVE TO THE NORTH (A RADIAL LINE THROUGH SAID POINT BEARS N09°40'40"E); SAID POINT ALSO BEING DESIGNATED AS REFERENCE POINT A; THENCE EASTERLY ALONG THE ARC OF SAID CURVE HAVING FOR ITS ELEMENTS A RADIUS OF 500.00 FEET, A CENTRAL ANGLE OF 18°40'40", A CHORD DISTANCE OF 162.27 FEET, A CHORD BEARING OF S85°59'40"E, AN ARC DISTANCE OF 162.99 FEET; THENCE N81°00'01"E, A DISTANCE OF 102.64 FEET; THENCE NORTHEASTERLY ALONG THE ARC OF A TANGENT CIRCULAR CURVE CONCAVE TO THE NORTHWEST, HAVING FOR ITS ELEMENTS A RADIUS OF 125.00 FEET, A CENTRAL ANGLE OF 55°00'01", A CHORD DISTANCE OF 115.44 FEET, A CHORD BEARING OF N53°30'00"E, AN ARC DISTANCE OF 119.99 FEET; THENCE N26°00'00"E, A DISTANCE OF 60.15 FEET; THENCE NORTHERLY ALONG THE ARC OF A TANGENT CIRCULAR CURVE CONCAVE TO THE WEST HAVING FOR ITS ELEMENTS A RADIUS OF 125.00 FEET, A CENTRAL ANGLE OF 57°59'59", A CHORD DISTANCE OF 121.20 FEET, A CHORD BEARING OF N03°00'00"W, AN ARC DISTANCE OF 126.54 FEET; THENCE N32°00'00"W, A DISTANCE OF 48.27 FEET; THENCE NORTHWESTERLY ALONG THE ARC OF A TANGENT CIRCULAR CURVE CONCAVE TO THE SOUTHWEST, HAVING FOR ITS ELEMENTS A RADIUS OF 150.00 FEET, A CENTRAL ANGLE OF 58°00'00", A CHORD DISTANCE OF 145.44 FEET, A CHORD BEARING OF N61°00'00"W, AN ARC DISTANCE OF 151.84 FEET; THENCE N90°00'00"W, A DISTANCE OF 32.49 FEET; THENCE NORTHWESTERLY ALONG THE ARC OF A TANGENT CIRCULAR CURVE CONCAVE TO THE NORTHWEST HAVING FOR ITS ELEMENTS A RADIUS OF 40.00 FEET, A CENTRAL ANGLE OF 144°00'00", A CHORD DISTANCE OF 76.08 FEET, A CHORD BEARING OF N18°00'00"W, AN ARC DISTANCE OF 100.53 FEET; THENCE N54°00'00"E, A DISTANCE OF 171.52 FEET; THENCE NORTHEASTERLY ALONG THE ARC OF A TANGENT CIRCULAR CURVE CONCAVE TO THE NORTHWEST HAVING FOR ITS ELEMENTS A RADIUS OF 200.00 FEET, A CENTRAL ANGLE OF 25°30'00", A CHORD DISTANCE OF 88.28 FEET, A CHORD BEARING OF N41°15'00"E, AN ARC DISTANCE OF 89.07 FEET; THENCE N28°30'00"E, A DISTANCE OF 118 FEET; THENCE NORTHEASTERLY ALONG THE ARC OF A TANGENT CIRCULAR CURVE CONCAVE TO THE SOUTHWEST HAVING FOR ITS ELEMENTS A RADIUS OF 40.00 FEET, A CENTRAL ANGLE OF 81°30'16", A CHORD DISTANCE OF 52.22 FEET, A CHORD BEARING OF N69°15'08"E, AN ARC DISTANCE OF 56.90 FEET TO A POINT OF REVERSE CURVATURE OF A TANGENT CIRCULAR CURVE CONCAVE TO THE NORTHEAST (A RADIAL LINE THROUGH SAID POINT BEARS N20°00'16"E); THENCE SOUTHEASTERLY ALONG THE ARC OF SAID CURVE HAVING FOR ITS ELEMENTS A RADIUS OF 150.00 FEET, A CENTRAL ANGLE OF 05°53'07", A CHORD DISTANCE OF 15.40 FEET, A CHORD BEARING OF S72°56'17"E, AN ARC DISTANCE OF 15.41 FEET; THENCE N16°02'11"E, A DISTANCE OF 149.91 FEET TO THE POINT OF BEGINNING.

PELICAN LANDING
 UNIT 9

A SUBDIVISION OF PART OF SECTION 16,
 TOWNSHIP 47 SOUTH, RANGE 25 EAST,
 AND A REPLAT OF LOT 1 BLOCK C
 OF THE PLAT OF
 PELICAN LANDING UNIT FOUR
 PLAT BOOK 49 PAGES 1-4,
 LEE COUNTY, FLORIDA

TOGETHER WITH
 LEGAL DESCRIPTION #2

A PARCEL OF LAND LYING IN SECTION 16, TOWNSHIP 47 SOUTH, RANGE 25 EAST, LEE COUNTY, FLORIDA, BEING MORE PARTICULARLY DESCRIBED AS FOLLOWS:

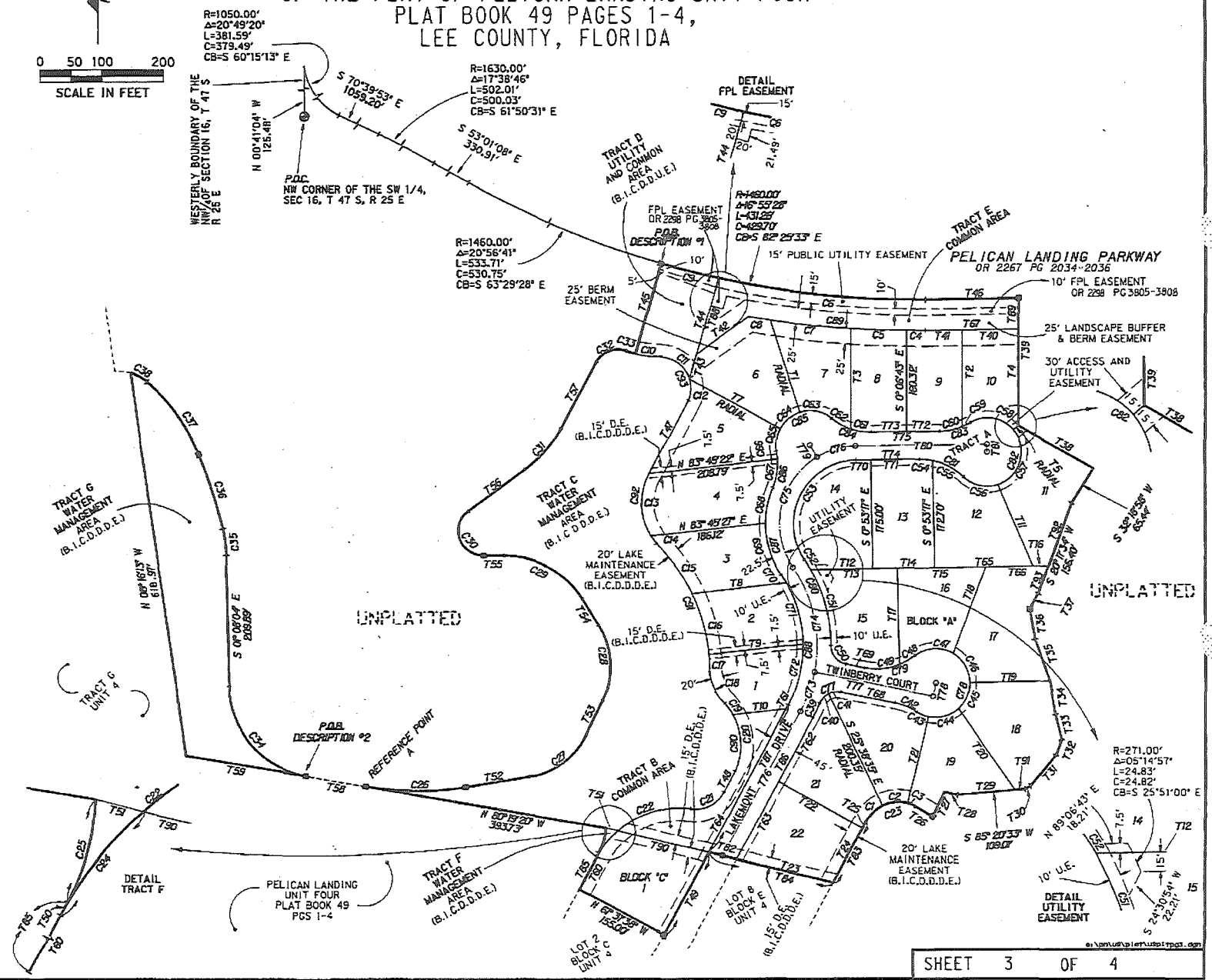
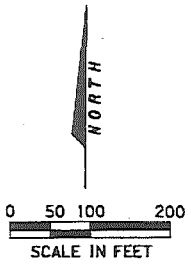
COMMENCE AT SAID REFERENCE POINT A; THENCE N80°19'20"W, A DISTANCE OF 96.57 FEET TO THE POINT OF BEGINNING; THENCE N80°19'20"W, A DISTANCE OF 197.34 FEET; THENCE N08°16'13"W, A DISTANCE OF 618.97 FEET TO A POINT ON THE ARC OF A NON-TANGENT CIRCULAR CURVE CONCAVE TO THE SOUTHWEST (A RADIAL LINE THROUGH SAID POINT BEARS S16°24'38"W); THENCE SOUTHEASTERLY ALONG THE ARC OF SAID CURVE HAVING FOR ITS ELEMENTS A RADIUS OF 72.00 FEET, A CENTRAL ANGLE OF 23°26'48", A CHORD DISTANCE OF 29.26 FEET, A CHORD BEARING OF S61°51'58"E, AN ARC DISTANCE OF 29.46 FEET TO A POINT OF COMPOUND CURVATURE OF A TANGENT CIRCULAR CURVE CONCAVE TO THE SOUTHWEST (A RADIAL LINE THROUGH SAID CURVE BEARS S39°51'26"W); THENCE SOUTHEASTERLY ALONG THE ARC OF SAID CURVE HAVING FOR ITS ELEMENTS A RADIUS OF 300.00 FEET, A CENTRAL ANGLE OF 27°41'11", A CHORD DISTANCE OF 143.56 FEET, A CHORD BEARING OF S38°17'58"E, AN ARC DISTANCE OF 144.97 FEET TO A POINT OF COMPOUND CURVATURE OF A TANGENT CIRCULAR CURVE CONCAVE TO THE SOUTHWEST (A RADIAL LINE THROUGH SAID POINT BEARS S67°32'37"W); THENCE SOUTHEASTERLY ALONG THE ARC OF SAID CURVE HAVING FOR ITS ELEMENTS A RADIUS OF 767.50 FEET, A CENTRAL ANGLE OF 09°08'01", A CHORD DISTANCE OF 125.40 FEET, A CHORD BEARING OF S17°53'22"E, AN ARC DISTANCE OF 125.40 FEET TO A POINT OF COMPOUND CURVATURE OF A TANGENT CIRCULAR CURVE CONCAVE TO THE WEST (A RADIAL LINE THROUGH SAID POINT BEARS S76°40'38"W); THENCE SOUTHERLY ALONG THE ARC OF SAID CURVE HAVING FOR ITS ELEMENTS A RADIUS OF 200.00 FEET, A CENTRAL ANGLE OF 12°11'18", A CHORD DISTANCE OF 42.47 FEET, A CHORD BEARING OF S07°13'43"E, AN ARC DISTANCE OF 42.55 FEET; THENCE S01°08'04"E, A DISTANCE OF 209.89 FEET; THENCE SOUTHEASTERLY ALONG THE ARC OF A TANGENT CIRCULAR CURVE CONCAVE TO THE NORTHEAST, HAVING FOR ITS ELEMENTS A RADIUS OF 150.00 FEET, A CENTRAL ANGLE OF 79°11'16", A CHORD DISTANCE OF 191.20 FEET, A CHORD BEARING OF S40°43'42"E, AN ARC DISTANCE OF 207.31 FEET TO THE POINT OF BEGINNING.
 CONTAINING 17.220 ACRES, MORE OR LESS.

PELICAN LANDING UNIT NINE

PLAT BOOK 49 101

A SUBDIVISION OF PART OF
SECTION 16, TOWNSHIP 47 SOUTH, RANGE 25 EAST
AND A REPLAT OF LOT 1 BLOCK C
OF THE PLAT OF PELICAN LANDING UNIT FOUR
PLAT BOOK 49 PAGES 1-4,
LEE COUNTY, FLORIDA

PREPARED BY:
PBS Post, Buckley, Schuh, & Jernigan, Inc.
6326 PRESIDENTIAL COURT
FORT MYERS, FL 33909
888-422-7275



PELICAN LANDING UNIT NINE

PLAT BOOK 49 PAGE 102
 PREPARED BY:
 Post, Buckley, Schuh & Jernigan, Inc.
 6325 PRESIDENTIAL COURT
 FORT MYERS, FL 33919

A SUBDIVISION OF PART OF
 SECTION 16, TOWNSHIP 47 SOUTH, RANGE 25 EAST
 AND A REPLAT OF LOT 1 BLOCK C
 OF THE PLAT OF PELICAN LANDING UNIT FOUR
 PLAT BOOK 49 PAGES 1-4,
 LEE COUNTY, FLORIDA

		CURVE TABLE				TANGENT TABLE					
NO.	RADIUS	Δ	LENGTH	CHORD	CHORD BEARING	NO.	RADIUS	Δ	LENGTH	CHORD	CHORD BEARING
C1	50.00	35°53'03"	37.58	36.97	S 46°24'53" W	C84	100.00	39°31'20"	68.98	67.62	N 71°07'37" W
C2	50.00	39°30'28"	41.37	40.56	S 84°06'38" W	C85	55.00	139°35'12"	133.99	103.23	S 58°50'28" W
C3	50.00	16°10'01"	16.93	16.87	N 68°03'09" E	C86	100.00	34°06'38"	59.53	58.66	S 06°06'11" W
C4	1510.00	01°10'00"	30.74	30.41	N 85°00'45" E	C87	147.50	57°17'23"	147.48	141.42	S 05°29'12" E
C5	1510.00	03°25'04"	90.08	90.06	S 84°17'52"	C88	200.00	62°36'15"	218.53	207.82	S 02°49'46" E
C6	1460.00	13°10'51"	335.87	335.13	S 83°49'45"	C89	1510.00	10°52'26"	286.56	286.15	S 85°27'07" E
C7	1510.00	04°56'55"	130.42	130.37	S 80°41'04"	C90	100.00	72°57'11"	127.33	118.90	S 08°00'15" E
C8	1510.00	01°20'27"	35.34	35.34	S 75°50'08"	C91	285.00	43°40'35"	217.25	212.03	S 02°15'51" E
C9	1460.00	03°44'37"	95.40	95.38	N 83°22'19"	C92	100.00	72°36'07"	126.71	118.41	S 07°48'05" E
C10	150.00	14°58'57"	39.22	39.11	N 54°13'34"	C93	50.00	119°21'46"	104.16	86.32	S 31°10'55" E
C11	50.00	73°16'27"	63.94	59.67	N 05°27'19"						
C12	50.00	46°05'19"	78.22	78.14	N 01°36'31"						
C13	100.00	60°12'59"	105.10	100.33	N 37°54'34"						
C14	100.00	12°23'08"	21.62	21.57	N 34°43'27"						
C15	285.00	18°45'23"	93.30	92.88	N 15°07'06"						
C16	285.00	20°27'19"	101.75	101.21	N 02°39'30"						
C17	285.00	04°27'53"	22.21	22.20	N 22°27'13"						
C18	75.00	44°03'18"	57.67	56.26	N 36°53'00"						
C19	100.00	55°5'43"	58.88	57.60	N 00°04'24"						
C20	100.00	57°05'29"	99.64	95.57	N 63°13'44"						
C21	50.00	69°30'47"	60.66	57.01	N 73°29'39"						
C22	150.00	48°58'47"	128.23	124.36	S 74°15'07"						
C23	60.00	91°33'30"	95.88	86.00	S 38°44'31"						
C24	150.00	20°32'00"	53.76	53.47	N 15°12'49"						
C25	50.00	26°31'05"	43.04	42.66	N 59°27'39"						
C26	500.00	18°20'40"	162.00	162.97	N 53°30'00"						
C27	125.00	55°00'01"	119.99	115.44	N 03°00'00"						
C28	125.00	57°59'59"	126.54	121.20	N 61°00'00"						
C29	150.00	58°00'00"	151.84	145.44	N 18°00'00"						
C30	40.00	144°00'00"	100.53	76.08	N 41°15'00"						
C31	200.00	25°30'00"	89.01	88.28	N 65°15'08"						
C32	40.00	82°30'16"	56.90	52.22	S 72°56'42"						
C33	150.00	05°53'07"	58.11	55.40	S 07°13'43"						
C34	150.00	79°11'16"	207.31	191.20	S 17°53'22"						
C35	200.00	12°11'18"	42.55	42.47	S 36°17'58"						
C36	787.50	09°08'01"	125.54	125.40	S 61°51'58"						
C37	300.00	27°41'11"	144.97	143.56	N 25°21'01"						
C38	72.00	23°26'48"	29.46	29.26	N 43°17'31"						
C39	245.00	06°14'41"	26.70	26.69	N 82°47'31"						
C40	30.00	42°08'08"	22.06	21.57	N 82°45'41"						
C41	30.00	36°5'08"	18.97	18.97	S 67°27'53"						
C42	100.00	22°01'59"	38.45	38.22	N 74°29'24"						
C43	55.00	21°26'23"	20.58	20.46	N 23°22'24"						
C44	55.00	54°39'05"	52.46	50.50	N 29°41'27"						
C45	55.00	47°34'56"	45.68	44.37	S 86°52'20"						
C46	55.00	58°32'45"	56.20	53.79	S 60°16'00"						
C47	55.00	68°59'41"	66.23	62.30	S 84°51'25"						
C48	100.00	16°27'01"	28.71	28.61	N 39°16'51"						
C49	100.00	32°43'49"	57.13	56.35	N 14°43'53"						
C50	30.00	78°59'39"	41.36	38.16	N 31°54'20"						
C51	245.00	29°53'44"	127.84	126.39	N 27°29'25"						
C52	245.00	04°27'08"	19.04	19.03	S 84°44'07"						
C53	102.50	123°14'37"	220.48	180.36	S 87°09'05"						
C54	100.00	12°18'19"	21.48	21.44	N 15°31'53"						
C55	100.00	32°29'08"	58.70	55.94	N 80°31'24"						
C56	55.00	62°06'38"	59.62	56.74	S 63°49'48"						
C57	55.00	112°31'20"	108.01	91.47	S 78°32'39"						
C58	55.00	79°35'14"	76.40	70.40	N 81°13'20"						
C59	100.00	08°17'36"	14.47	14.46	S 28°28'22"						
C60	100.00	21°08'07"	36.89	36.68	N 28°28'22"						
C61	100.00	19°19'54"	35.74	35.52	N 79°40'56"						
C62	100.00	20°11'27"	35.24	35.06	S 50°12'12"						
C63	55.00	56°37'58"	54.36	52.18	S 08°43'35"						
C64	55.00	43°35'46"	41.85	40.85	S 07°21'36"						
C65	55.00	39°21'27"	37.78	37.04	S 09°41'43"						
C66	100.00	07°11'06"	12.54	12.53	N 11°46'07"						
C67	100.00	26°55'32"	46.99	46.56	N 74°07'20"						
C68	147.50	22°42'45"	58.47	58.05	N 61°43'31"						
C69	147.50	34°34'38"	87.67	87.67	N 02°21'06"						
C70	200.00	04°23'51"	15.35	15.35	S 76°37'55"						
C71	200.00	29°18'35"	102.31	101.20	N 16°57'27"						
C72	200.00	28°53'50"	100.87	99.80	S 88°29'33"						
C73	222.50	17°15'02"	66.99	66.74	N 06°47'33"						
C74	222.50	45°21'14"	176.12	171.56	S 74°23'51"						
C75	125.00	93°23'51"	203.76	181.39							
C76	100.00	29°50'45"	65.11	65.38							
C77	30.00	78°59'39"	41.36	38.16							
C78	55.00	251°12'49"	241.15	89.43							
C79	100.00	49°10'50"	85.84	83.23							
C80	245.00	34°20'53"	146.87	144.68							
C81	100.00	44°47'21"	78.17	76.20							
C82	55.00	254°13'11"	244.03	87.72							
C83	100.00	29°25'43"	51.36	50.80							

c:\pml\as\plm\aspl1\tpg4.dgn