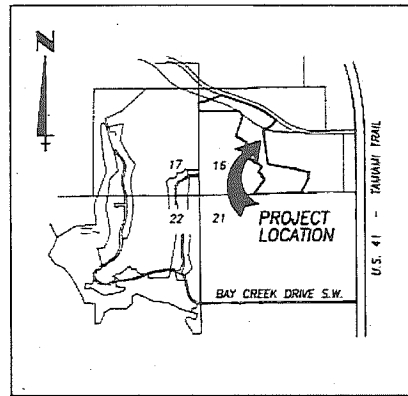


NOTICE

LANDS DESCRIBED IN THIS PLAT ARE SUBDIVIDED BY THE DEVELOPER WITHOUT THE ROADS, DRAINAGE AND SEWER FACILITIES BEING SPECIFICALLY ACCEPTED FOR MAINTENANCE BY LEE COUNTY. ANY PURCHASER OF A LOT IN THIS SUBDIVISION IS ADVISED THAT HE MAY BE SUBJECT TO ASSESSMENT OR CALLED UPON TO BEAR A PORTION OR ALL OF THE EXPENSE OF CONSTRUCTION, MAINTENANCE OR IMPROVEMENT OF ROADS, DRAINAGE AND SEWER FACILITIES WITHIN THE SUBDIVISION.

PELICAN LANDING UNIT FOUR

A SUBDIVISION OF PART OF SECTION 16, TOWNSHIP 47 SOUTH, RANGE 25 EAST LEE COUNTY, FLORIDA



VICINITY SKETCH NOT TO SCALE

DESCRIPTION

ALL THAT PART OF SECTION 16, TOWNSHIP 47 SOUTH, RANGE 25 EAST, LEE COUNTY, FLORIDA, BEING MORE PARTICULARLY DESCRIBED AS FOLLOWS: COMMENCING AT THE SOUTHWEST CORNER OF SAID SECTION 16; THENCE ALONG THE SOUTH LINE OF SAID SECTION 16 AND THE SOUTH LINE OF PELICAN LANDING UNIT THREE ACCORDING TO THE PLAT THEREOF AS RECORDED IN PLAT BOOK 46, PAGES 61 THROUGH 65, PUBLIC RECORDS OF LEE COUNTY, FLORIDA, N.88°38'34"E, A DISTANCE OF 1384.13 FEET TO THE POINT OF BEGINNING OF THE PARCEL HEREIN DESCRIBED; THENCE ALONG THE BOUNDARY OF SAID PELICAN LANDING UNIT THREE IN THE FOLLOWING THIRTY-TWO (32) DESCRIBED CURVES: 1) N.00°17'43"W, A DISTANCE OF 60.48 FEET; 2) N.47°35'57"E, A DISTANCE OF 116.90 FEET; 3) N.31°38'42"E, A DISTANCE OF 89.10 FEET; 4) N.33°38'03"E, A DISTANCE OF 77.72 FEET; 5) N.88°49'54"E, A DISTANCE OF 23.58 FEET; 6) N.28°04'42"E, A DISTANCE OF 120.00 FEET; 7) N.81°55'14"W, A DISTANCE OF 26.77 FEET TO THE POINT OF CURVATURE OF A CURVE TO THE RIGHT, HAVING A RADIUS OF 695.00 FEET, A CENTRAL ANGLE OF 06°31'20", A TANGENT LENGTH OF 39.60 FEET, A CHORD BEARING OF N.58°39'38"W, AND A CHORD LENGTH OF 79.07 FEET; 8) ALONG THE ARC OF SAID CURVE, AN ARC LENGTH OF 79.11 FEET TO THE END OF SAID CURVE; 9) N.34°36'01"E, A DISTANCE OF 45.00 FEET TO A POINT ON A CURVE TO THE RIGHT, HAVING A RADIUS OF 650.00 FEET, A CENTRAL ANGLE OF 05°49'06", A TANGENT LENGTH OF 38.72 FEET, A CHORD BEARING OF N.51°59'27"W, AND A CHORD LENGTH OF 77.31 FEET; 10) ALONG THE ARC OF SAID CURVE, AN ARC LENGTH OF 77.35 FEET TO THE END OF SAID CURVE; 11) N.50°01'29"W, A DISTANCE OF 56.55 FEET; 12) N.38°31'56"E, A DISTANCE OF 161.77 FEET; 13) N.55°21'18"W, A DISTANCE OF 111.68 FEET; 14) N.27°40'58"E, A DISTANCE OF 89.95 FEET; 15) N.58°44'27"W, A DISTANCE OF 188.11 FEET; 16) N.59°12'07"W, A DISTANCE OF 94.65 FEET; 17) N.53°56'25"W, A DISTANCE OF 72.30 FEET; 18) N.25°18'04"W, A DISTANCE OF 74.94 FEET; 19) N.34°06'23"E, A DISTANCE OF 78.72 FEET; 20) N.30°43'15"E, A DISTANCE OF 88.96 FEET; 21) N.27°40'58"E, A DISTANCE OF 94.26 FEET; 22) N.63°55'57"W, A DISTANCE OF 150.01 FEET TO A POINT ON A CURVE TO THE LEFT, HAVING A RADIUS OF 1522.50 FEET, A CENTRAL ANGLE OF 00°37'21", A TANGENT LENGTH OF 8.27 FEET, A CHORD BEARING OF N.25°45'22"E, AND A CHORD DISTANCE OF 16.54 FEET; 23) ALONG THE ARC OF SAID CURVE, AN ARC LENGTH OF 16.54 FEET TO THE END OF SAID CURVE; 24) N.64°33'18"W, A DISTANCE OF 187.32 FEET; 25) N.25°14'09"E, A DISTANCE OF 70.30 FEET; 26) N.22°11'38"E, A DISTANCE OF 112.01 FEET; 27) N.21°32'18"E, A DISTANCE OF 116.73 FEET; 28) N.18°06'13"E, A DISTANCE OF 99.79 FEET; 29) N.13°50'36"E, A DISTANCE OF 99.79 FEET; 30) N.10°45'21"E, A DISTANCE OF 59.13 FEET; 31) N.39°41'28"W, A DISTANCE OF 137.02 FEET; 32) S.89°08'08"W, A DISTANCE OF 115.38 FEET TO THE WEST LINE OF THE SOUTHWEST 1/4 OF SAID SECTION 16; THENCE N.00°18'31"W, ALONG SAID WEST LINE, A DISTANCE OF 232.28 FEET; THENCE N.85°08'08"E, A DISTANCE OF 116.48 FEET; THENCE N.75°01'27"E, A DISTANCE OF 56.04 FEET; THENCE N.70°23'53"E, A DISTANCE OF 450.01 FEET; THENCE S.70°39'53"E, A DISTANCE OF 774.88 FEET TO THE POINT OF CURVATURE OF A CURVE TO THE RIGHT, HAVING A RADIUS OF 1630.00 FEET, A CENTRAL ANGLE OF 37°38'46", A TANGENT LENGTH OF 253.01 FEET, A CHORD BEARING OF S.61°50'07"W, AND A CHORD LENGTH OF 500.23 FEET; THENCE ALONG THE ARC OF SAID CURVE, AN ARC LENGTH OF 502.01 FEET TO THE POINT OF TANGENCY OF SAID CURVE; THENCE S.53°01'08"E, A DISTANCE OF 252.42 FEET TO A POINT OF CUSP OF A CURVE TO THE LEFT, HAVING A RADIUS OF 37.50 FEET, A CENTRAL ANGLE OF 90°00'00", A TANGENT LENGTH OF 37.50 FEET, A CHORD BEARING OF S.81°50'07"W, AND A CHORD LENGTH OF 53.03 FEET; THENCE ALONG THE ARC OF SAID CURVE, AN ARC LENGTH OF 58.90 FEET TO THE POINT OF TANGENCY OF SAID CURVE; THENCE S.36°58'52"W, A DISTANCE OF 86.13 FEET TO THE POINT OF CURVATURE OF A CURVE TO THE RIGHT, HAVING A RADIUS OF 400.00 FEET, A CENTRAL ANGLE OF 37°38'59", A TANGENT LENGTH OF 136.37 FEET, A CHORD BEARING OF S.55°40'27"W, AND A CHORD LENGTH OF 258.14 FEET; THENCE ALONG THE ARC OF SAID CURVE, AN ARC LENGTH OF 262.85 FEET TO THE POINT OF TANGENCY OF SAID CURVE; THENCE S.74°37'52"W, A DISTANCE OF 35.61 FEET; THENCE S.08°16'13"E, A DISTANCE OF 850.00 FEET; THENCE S.80°19'20"E, A DISTANCE OF 687.64 FEET; THENCE S.76°31'09"E, A DISTANCE OF 377.64 FEET; THENCE S.28°28'22"W, A DISTANCE OF 86.41 FEET TO THE POINT OF CURVATURE OF A CURVE TO THE LEFT, HAVING A RADIUS OF 30.00 FEET, A CENTRAL ANGLE OF 120°00'00", A TANGENT LENGTH OF 51.96 FEET, A CHORD BEARING OF S.31°31'38"E, AND A CHORD LENGTH OF 51.96 FEET; THENCE ALONG THE ARC OF SAID CURVE, AN ARC LENGTH OF 62.83 FEET TO THE END OF SAID CURVE; THENCE S.28°28'22"W, A DISTANCE OF 448.74 FEET; THENCE S.88°38'34"W, A DISTANCE OF 1149.46 FEET TO THE POINT OF BEGINNING OF THE PARCEL HEREIN DESCRIBED; PARCEL CONTAINS 44.92 ACRES, MORE OR LESS.

NOTICE

THERE MAY BE ADDITIONAL RESTRICTIONS THAT ARE NOT RECORDED ON THIS PLAT THAT MAY BE FOUND IN THE PUBLIC RECORDS OF THIS COUNTY.

NOTES

- 1. BEARINGS SHOWN HEREON ARE BASED ON THE SOUTH LINE OF SECTION 16, TOWNSHIP 47 SOUTH, RANGE 25 EAST, LEE COUNTY, FLORIDA AND THE SOUTH LINE OF "PELICAN LANDING UNIT THREE", AS RECORDED IN PLAT BOOK 46, PAGES 61 THROUGH 65, PUBLIC RECORDS OF LEE COUNTY, FLORIDA BEING N.88°38'34"E.
2. ALL DIMENSIONS ARE IN FEET AND DECIMALS THEREOF.
3. ALL CURVES INDICATED ARE CIRCULAR.
4. (12) DENOTES A CURVE NUMBER REFERENCED TO A CURVE DATA TABLE.
5. (NR) DENOTES A NON-RADIAL LINE.
6. (M) DENOTES PERMANENT REFERENCE MONUMENT (P.R.M.); A "4"x4" TAPERED CONCRETE MONUMENT WITH METAL DISK BEARING THE SURVEYOR'S CERTIFICATE NUMBER 4576 (UNLESS OTHERWISE INDICATED).
7. (F) DENOTES FOUND P.R.M. BEARING THE NUMBER 4106 OR 3873 (UNLESS OTHERWISE INDICATED).
8. (C) DENOTES PERMANENT CONTROL POINT (P.C.P.); A 60# NAIL WITH METAL DISK BEARING THE SURVEYOR'S CERTIFICATE NUMBER 4576 (UNLESS OTHERWISE INDICATED).
9. (O) DENOTES PERMANENT CONTROL POINT (P.C.P.) THAT HAS NOT BEEN SET. UPON COMPLETION OF THE ROAD CONSTRUCTION, THESE P.C.P.'S SHALL BE INSTALLED IN ACCORDANCE WITH PART 1 OF CHAPTER 177, FLORIDA STATUTES.
10. D.E. INDICATES DRAINAGE EASEMENT.
11. U.E. INDICATES UTILITY EASEMENT.
12. B.L.O.D.E. AND B.L.D.U.E. INDICATE BAYSIDE IMPROVEMENT DISTRICT DRAINAGE EASEMENT AND UTILITY EASEMENT RESPECTFULLY.
13. A 6.00 FOOT UTILITY EASEMENT IS RESERVED ALONG THE SIDE AND REAR LINES AND A 10.00 FOOT UTILITY EASEMENT IS RESERVED ALONG THE FRONT LINE OF EACH BUILDING SITE. SEE PLAT FOR ADDITIONAL EASEMENTS.

SURVEYOR'S CERTIFICATE

I HEREBY CERTIFY THAT THE ATTACHED PLAT OF PELICAN LANDING UNIT FOUR, IS A TRUE AND CORRECT REPRESENTATION OF THE HEREIN DESCRIBED LAND ACCORDING TO A RECENT SURVEY MADE AND PLATTED UNDER MY DIRECTION AND SUPERVISION AND THAT THE SURVEY DATA COMPLIES WITH ALL OF THE REQUIREMENTS OF PART I OF CHAPTER 177, FLORIDA STATUTES. I FURTHER CERTIFY THAT THE PERMANENT REFERENCE MONUMENTS (PRM'S) HAVE BEEN PLACED AT THE LOCATIONS SHOWN ON THE PLAT.

PREPARED BY: WILSON, MILLER, BARTON & PEEK, INC. FLORIDA CERTIFICATE OF AUTHORIZATION NO. LB 43

Elizabeth F. Gaines, PROFESSIONAL LAND SURVEYOR FLORIDA LICENSE NO. 4576

DEDICATION

KNOW ALL MEN BY THESE PRESENTS THAT WESTINGHOUSE BAYSIDE COMMUNITIES, INC., A CORPORATION UNDER THE LAWS OF THE STATE OF FLORIDA, OWNER OF THE LANDS DESCRIBED HEREIN HAS CAUSED THIS PLAT OF PELICAN LANDING UNIT FOUR TO BE MADE AND SUCH LANDS TO BE SUBDIVIDED AS SHOWN HEREON AND DOES HEREBY MAKE THE FOLLOWING DEDICATIONS:

- TRACTS "D", "E", "F", "G", "H", THE LANDSCAPE BUFFER EASEMENTS, B THE ROAD RIGHTS-OF-WAY OF PENNYROYAL DRIVE AND SWEET GUM COURT, (HEREINAFTER COLLECTIVELY REFERRED TO AS TRACT "E") AND GOLDEN TIC LANE AND RACOMONT DRIVE (HEREINAFTER COLLECTIVELY REFERRED TO AS TRACT "C") TO THE PELICAN LANDING COMMUNITY ASSOCIATION, INC., A FLORIDA CORPORATION FOR THE BENEFIT OF ITS PRESENT AND FUTURE MEMBERS, ITS SUCCESSORS AND ITS ASSIGNS, AND THEIR TENANTS, INVITEES, LICENSEES, MORTGAGEES, AND EMPLOYEES.
- LAKE MAINTENANCE AND DRAINAGE EASEMENTS SHOWN HEREON ARE DEDICATED TO THE BAYSIDE IMPROVEMENT DISTRICT.
- A COMMON AREA AND AN EASEMENT FOR UTILITY PURPOSES ON OVER AND UNDER TRACT "A" IS HEREBY GRANTED TO THE BAYSIDE IMPROVEMENT DISTRICT.
- AN EASEMENT FOR DRAINAGE AND UTILITY PURPOSES ON OVER AND UNDER TRACTS "B" AND "C" IS HEREBY GRANTED TO THE BAYSIDE IMPROVEMENT DISTRICT AND PUBLIC UTILITIES.
- ALL UTILITY EASEMENTS SHOWN HEREON ARE FOR PURPOSES OF INSTALLATION, REPAIR AND MAINTENANCE OF WATER, SEWER, ELECTRIC, TELEPHONE AND CABLE TELEVISION AND ARE DEDICATED HEREBY.

IN WITNESS WHEREOF, WESTINGHOUSE BAYSIDE COMMUNITIES, INC. HAS CAUSED THESE PRESENTS TO BE MADE AND SIGNED IN ITS NAME BY ITS PRESIDENT, ITS CORPORATE SEAL AFFIXED, AND ATTESTED TO BY ITS SECRETARY THIS 11th DAY OF October, A.D. 1991.

WESTINGHOUSE BAYSIDE COMMUNITIES, INC.

David W. Caldwell, WITNESS TO ALL

Samuel L. Crouch, EXECUTIVE VICE-PRESIDENT

Robert W. McClure, WITNESS TO ALL

Robert W. McClure, SECRETARY

ACKNOWLEDGEMENT

STATE OF FLORIDA, COUNTY OF LEE

I HEREBY CERTIFY THAT ON THIS DAY PERSONALLY APPEARED BEFORE ME SAMUEL L. CROUCH, EXECUTIVE VICE-PRESIDENT AND ROBERT W. MCCLURE, SECRETARY OF WESTINGHOUSE BAYSIDE COMMUNITIES, INC., A CORPORATION UNDER THE LAWS OF THE STATE OF FLORIDA, TO ME WELL KNOWN TO BE THE PERSONS DESCRIBED HEREIN AND WHO EXECUTED THE FOREGOING DEDICATION AND THEY ACKNOWLEDGED THE EXECUTION THEREOF TO BE THEIR FREE ACT AND DEED AS SUCH OFFICERS FOR THE USES AND PURPOSES THEREIN EXPRESSED AND THEY AFFIXED THERETO THE OFFICIAL SEAL OF SAID CORPORATION AND THAT SAID DEDICATION IS THE ACT AND DEED OF SAID CORPORATION.

WITNESS MY HAND AND NOTARIAL SEAL AT SAID COUNTY AND STATE THIS 11th DAY OF October, A.D. 1991.

Notary Public, State of Florida at Large, My Commission Expires 10-30-90, A.D. 1993

APPROVALS

THIS PLAT WAS ACCEPTED THIS 27th DAY OF NOVEMBER, A.D. 1991, IN AN OPEN MEETING OF THE BOARD OF COUNTY COMMISSIONERS OF LEE COUNTY, FLORIDA.

Vicki Jean Wolfe, VICE CHAIRMAN OF THE BOARD; Cheri Jallen, CLERK OF COURT

Andree M. Lang, COUNTY ADMNRY; Mary Gibbs, DIRECTOR, DEPARTMENT OF COMMUNITY DEVELOPMENT

Paul A. B. B. DIRECTOR, DEPARTMENT OF DEVELOPMENT REVIEW

CLERK'S CERTIFICATE

\$120076

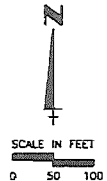
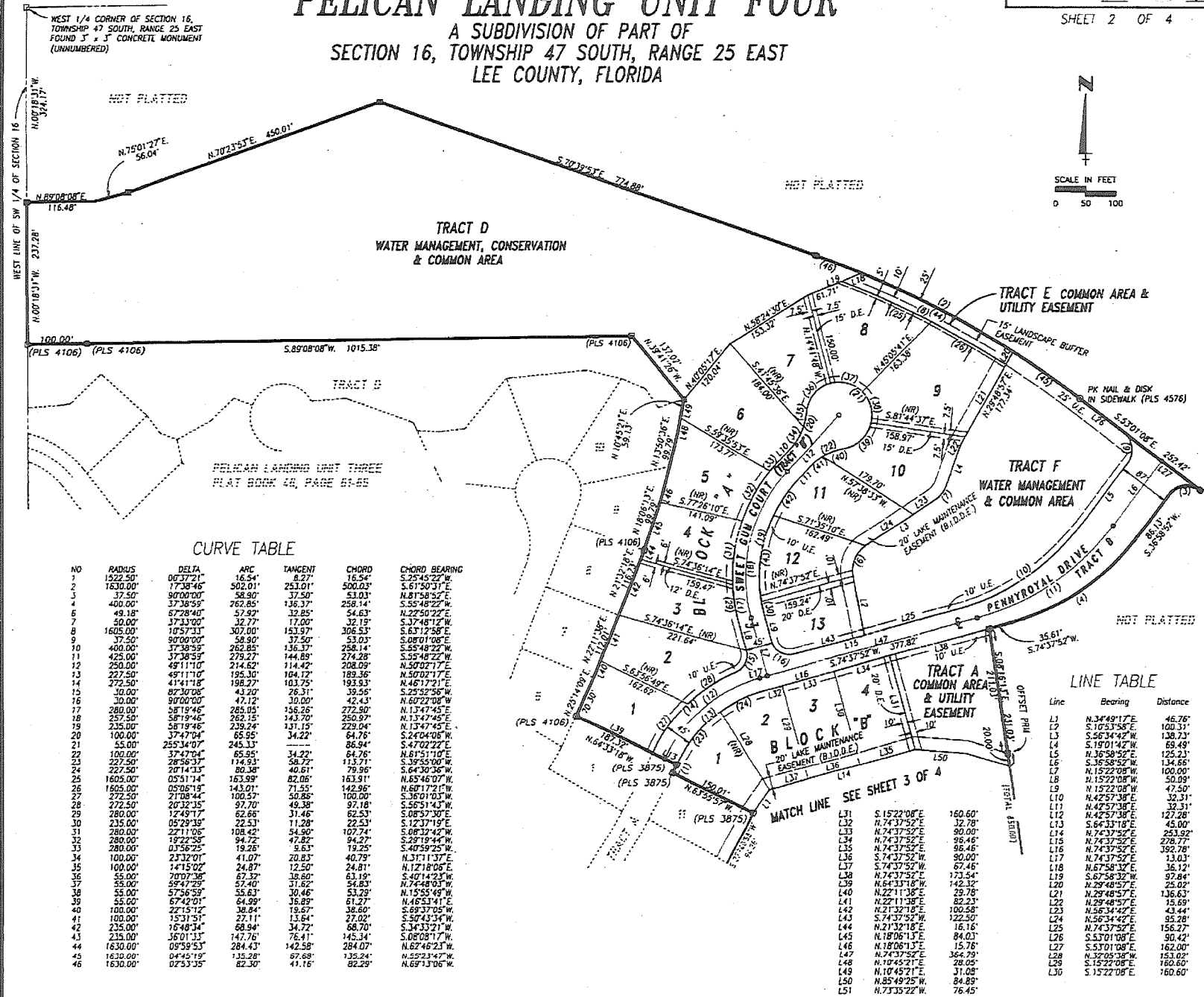
I HEREBY CERTIFY THAT THIS PLAT OF PELICAN LANDING UNIT FOUR HAS BEEN EXAMINED BY ME AND FROM MY EXAMINATION I FIND THAT PLAT COMPLIES WITH THE REQUIREMENTS OF CHAPTER 177 OF THE FLORIDA STATUTES. I FURTHER CERTIFY THAT SAID PLAT WAS FILED FOR RECORD ON THIS 30th DAY OF DECEMBER, A.D. 1991, AND DULY RECORDED IN PLAT BOOK #9 AT PAGES 1 THROUGH 4 OF THE PUBLIC RECORDS OF LEE COUNTY, FLORIDA.

Cheri Jallen, CLERK OF THE CIRCUIT COURT IN AND FOR LEE COUNTY, FLORIDA

WILSON-MILLER-BARTON & PEEK, INC. Engineers-Planners-Surveyors-Landscape Architects-Environmental Consultants-Construction Managers 4571 COLONIAL BOULEVARD, FORT MYERS, FLORIDA 33912 (813) 938-1020 FAX (813) 938-7470

PELICAN LANDING UNIT FOUR

A SUBDIVISION OF PART OF
SECTION 16, TOWNSHIP 47 SOUTH, RANGE 25 EAST
LEE COUNTY, FLORIDA



WEST 1/4 CORNER OF SECTION 16,
TOWNSHIP 47 SOUTH, RANGE 25 EAST
FOUND 3" x 3" CONCRETE MONUMENT
(UNNUMBERED)

NOT PLATTED

N.75°01'27"E. 56.04'

N.70°23'57"E. 450.01'

S.70°39'57"E. 774.80'

N.89°04'08"E. 116.46'

WEST LINE OF SW 1/4 OF SECTION 16
N.00°18'31"W. 237.28'

100.00' (PLS 4106)

5.89°08'08"W. 1015.38'

100.00' (PLS 4106)

TRACT D
WATER MANAGEMENT, CONSERVATION
& COMMON AREA

TRACT E COMMON AREA & UTILITY EASEMENT

TRACT F
WATER MANAGEMENT
& COMMON AREA

TRACT A COMMON AREA & UTILITY EASEMENT

BLOCK 5
20' LAKE MAINTENANCE
EASEMENT (B.I.D.D.E.)

CURVE TABLE

NO	RADIUS	DELTA	ARC	TANGENT	CHORD	CHORD BEARING
1	1522.50'	00°57'21"	16.54'	8.27'	15.56'	S.25°45'27"E.
2	1630.00'	17°38'46"	502.01'	253.01'	500.03'	S.61°50'31"E.
3	37.50'	90°00'00"	58.90'	37.50'	53.03'	N.81°58'52"E.
4	400.00'	37°38'59"	262.85'	136.37'	258.14'	S.55°48'22"W.
5	49.18'	67°28'40"	57.92'	32.95'	54.63'	N.22°50'22"E.
6	50.00'	37°33'00"	32.77'	17.00'	32.19'	S.37°48'12"W.
7	1605.00'	10°57'11"	307.00'	153.97'	306.53'	S.63°12'58"E.
8	37.50'	90°00'00"	58.90'	37.50'	53.03'	S.08°01'08"E.
9	400.00'	37°38'59"	262.85'	136.37'	258.14'	S.55°48'22"W.
10	425.00'	37°38'59"	279.27'	144.89'	274.28'	S.55°48'22"W.
11	250.00'	49°11'10"	214.62'	114.42'	208.09'	N.50°02'17"E.
12	227.50'	49°11'10"	195.30'	104.72'	189.36'	N.50°02'17"E.
13	272.50'	41°41'18"	198.27'	103.75'	193.53'	N.46°17'01"E.
14	30.00'	82°30'06"	43.20'	26.31'	39.56'	S.25°52'56"W.
15	30.00'	90°00'00"	47.12'	30.00'	42.43'	N.60°22'08"W.
16	280.00'	58°19'46"	285.05'	156.26'	272.90'	N.17°47'45"E.
17	257.50'	58°19'46"	262.15'	142.70'	250.07'	N.13°47'46"E.
18	235.00'	58°19'46"	239.24'	131.15'	229.04'	N.13°47'45"E.
19	100.00'	37°47'04"	65.95'	34.22'	64.76'	S.24°04'08"W.
20	55.00'	255°34'07"	245.13'	122.57'	245.13'	S.47°02'22"E.
21	100.00'	37°47'04"	65.95'	34.22'	64.76'	N.61°51'10"E.
22	100.00'	37°47'04"	65.95'	34.22'	64.76'	S.39°55'00"W.
23	227.50'	20°14'33"	80.38'	40.61'	79.96'	S.64°30'56"W.
24	227.50'	20°14'33"	80.38'	40.61'	79.96'	N.65°46'07"W.
25	1605.00'	05°06'19"	143.01'	71.55'	142.96'	N.60°17'21"W.
26	272.50'	21°08'44"	100.57'	50.85'	100.00'	S.36°01'03"W.
27	272.50'	20°32'35"	97.70'	49.38'	97.18'	S.55°51'43"W.
28	280.00'	17°49'17"	62.66'	31.46'	62.53'	S.08°57'31"E.
29	235.00'	05°29'19"	22.53'	11.28'	22.53'	S.12°37'19"E.
30	280.00'	22°11'05"	108.42'	54.90'	107.74'	S.08°32'42"W.
31	280.00'	19°22'58"	97.82'	47.82'	94.76'	S.10°14'25"W.
32	280.00'	03°56'25"	19.28'	9.63'	19.25'	S.40°59'25"W.
33	100.00'	23°32'01"	41.07'	20.83'	40.79'	N.31°11'37"E.
34	100.00'	14°15'02"	24.87'	12.50'	24.81'	N.12°18'05"E.
35	55.00'	70°07'36"	67.37'	36.80'	63.19'	S.40°14'25"W.
36	55.00'	59°47'26"	67.40'	37.16'	64.83'	N.74°48'03"W.
37	55.00'	57°56'59"	55.63'	30.46'	53.79'	N.15°55'49"W.
38	55.00'	67°42'01"	64.99'	35.89'	61.27'	N.46°51'41"E.
39	100.00'	22°15'12"	38.84'	19.57'	38.60'	S.69°37'05"W.
40	100.00'	15°31'51"	27.11'	13.64'	27.02'	S.50°43'34"W.
41	235.00'	16°48'34"	68.94'	34.72'	68.70'	S.34°33'21"W.
42	235.00'	16°30'13"	147.76'	76.41'	145.34'	S.08°08'17"W.
43	1630.00'	09°59'53"	284.43'	142.59'	284.07'	N.62°46'22"W.
44	1630.00'	04°45'19"	135.28'	67.68'	135.24'	N.55°23'47"W.
45	1630.00'	02°53'35"	82.30'	41.16'	82.29'	N.69°13'06"W.

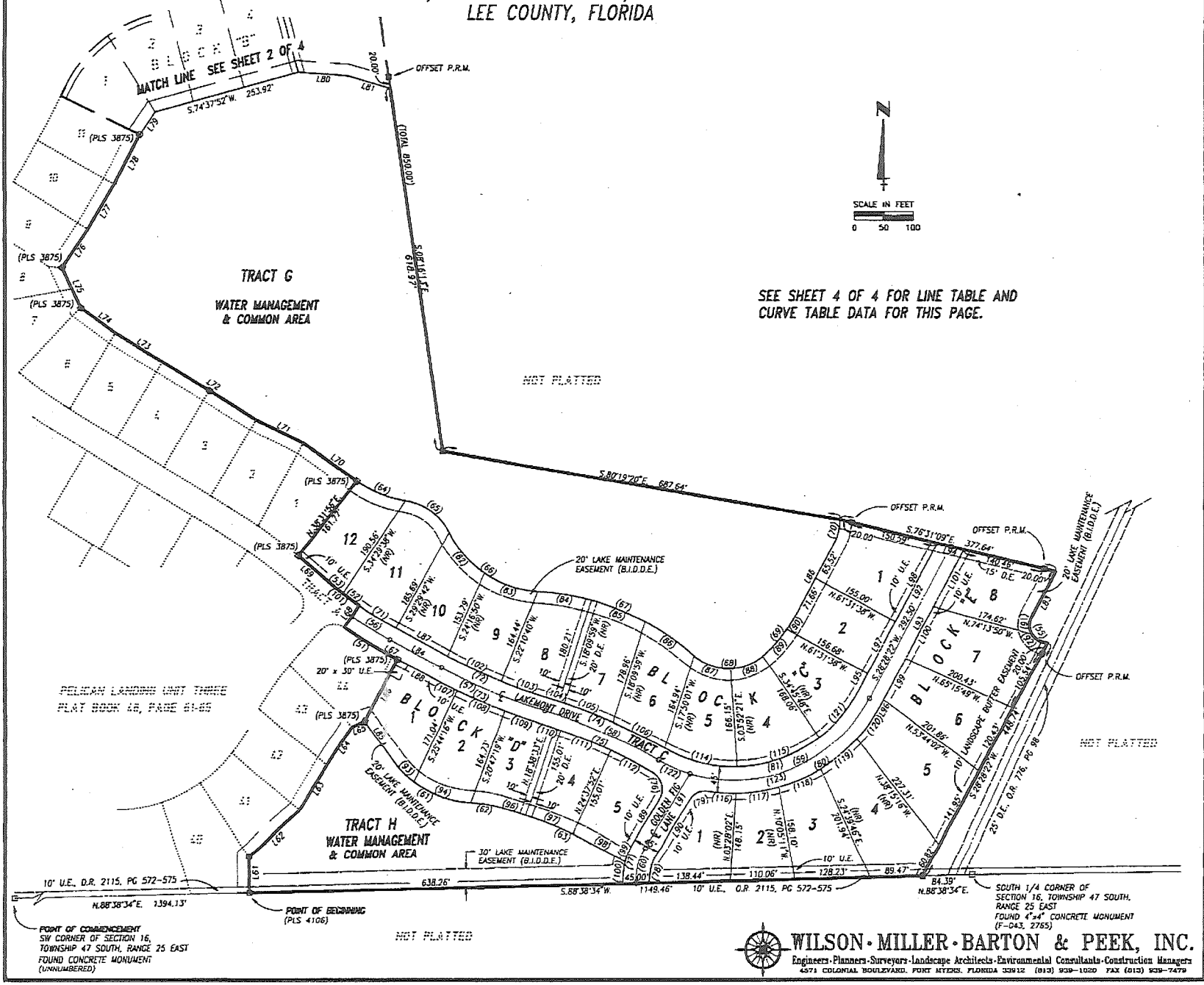
LINE TABLE

Line	Bearing	Distance
L1	N.344°17'E.	46.76'
L2	S.1051°58'E.	100.31'
L3	S.5634°42'W.	138.73'
L4	S.1501°42'W.	69.49'
L5	N.3658°52'E.	125.23'
L6	S.3658°52'W.	134.66'
L7	N.1522°08'W.	100.00'
L8	N.1522°08'W.	50.09'
L9	N.1522°08'W.	47.50'
L10	N.4257°38'E.	32.31'
L11	N.4257°38'E.	39.31'
L12	N.4257°38'E.	127.28'
L13	S.6433°18'E.	45.00'
L14	N.7437°52'E.	253.92'
L15	N.7437°52'E.	278.77'
L16	N.7437°52'E.	392.78'
L17	N.7437°52'E.	13.03'
L18	N.6758°37'E.	36.12'
L19	S.6758°37'W.	97.84'
L20	N.2948°52'E.	25.02'
L21	N.2948°52'E.	136.63'
L22	N.2948°52'E.	15.69'
L23	N.5634°42'E.	43.44'
L24	N.5634°42'E.	95.28'
L25	N.7437°52'E.	156.27'
L26	S.5301°08'W.	90.42'
L27	S.5301°08'W.	162.00'
L28	N.3205°38'W.	153.02'
L29	S.1522°08'W.	160.60'
L30	S.1522°08'W.	160.60'

WILSON · MILLER · BARTON & PEEK, INC.
Engineers · Planners · Surveyors · Landscape Architects · Environmental Consultants · Construction Managers
4571 COLONIAL BOULEVARD, FORT MYERS, FLORIDA 33912 (813) 939-1020 FAX (813) 939-7478

PELICAN LANDING UNIT FOUR

A SUBDIVISION OF PART OF
SECTION 16, TOWNSHIP 47 SOUTH, RANGE 25 EAST
LEE COUNTY, FLORIDA



SEE SHEET 4 OF 4 FOR LINE TABLE AND
CURVE TABLE DATA FOR THIS PAGE.

POINT OF COMMENCEMENT
SW CORNER OF SECTION 16,
TOWNSHIP 47 SOUTH, RANGE 25 EAST
FOUND CONCRETE MONUMENT
(UNNUMBERED)

WILSON · MILLER · BARTON & PEEK, INC.
Engineers · Planners · Surveyors · Landscape Architects · Environmental Consultants · Construction Managers
4574 COLONIAL BOULEVARD, FORT MYERS, FLORIDA 33912 (813) 939-1020 FAX (813) 939-7479

PELICAN LANDING UNIT FOUR

A SUBDIVISION OF PART OF
SECTION 16, TOWNSHIP 47 SOUTH, RANGE 25 EAST
LEE COUNTY, FLORIDA

CURVE AND LINE DATA FOR SHEET 3 OF 4

CURVE TABLE

NO.	RADIUS	DELTA	ARC	TANGENT	CHORD	CHORD BEARING
51	695.00'	0631'20"	79.11'	38.80'	79.07'	N.5039'38"W
52	650.00'	0101'33"	34.13'	17.17'	34.32'	N.5375'31"W
53	690.00'	0347'33"	43.02'	21.52'	43.02'	N.5028'40"W
55	30.00'	1200'00"	62.83'	51.96'	51.96'	N.3131'38"W
56	672.50'	0631'23"	76.57'	38.53'	76.53'	N.5639'41"W
57	1000.00'	1054'17"	190.42'	95.50'	190.33'	N.6722'42"W
58	1000.00'	1205'51"	211.14'	105.96'	210.75'	S.6647'05"E
59	263.38'	9047'28"	90.4728'	26.04'	375.04'	S.7352'06"W
60	110.00'	3745'00"	62.88'	30.72'	62.02'	N.7454'07"E
61	175.00'	5058'16"	156.70'	83.43'	150.61'	N.6152'08"W
62	220.00'	1738'13"	48.52'	24.36'	48.42'	S.8102'19"E
63	822.49'	1625'16"	235.74'	116.88'	234.93'	S.6930'34"E
64	200.00'	2000'21"	90.78'	46.18'	90.00'	N.6821'23"W
65	100.00'	5447'18"	95.62'	51.82'	92.02'	S.5358'13"E
66	180.00'	5954'24"	188.20'	103.73'	179.75'	N.5631'46"W
67	450.00'	3722'23"	293.53'	152.20'	288.35'	S.6747'47"E
68	30.00'	8100'10"	127.24'	76.87'	116.90'	N.8926'40"W
69	239.28'	2124'53"	89.43'	45.24'	86.91'	S.3910'48"W
70	93.00'	2631'05"	43.04'	21.91'	42.56'	S.1512'49"W
71	650.00'	0631'23"	74.01'	37.04'	73.97'	N.5639'41"W
72	977.50'	977'50"	185.33'	92.66'	185.86'	N.6722'42"W
73	1022.50'	1054'17"	194.71'	97.65'	194.41'	N.6722'42"W
74	1022.50'	1205'51"	215.89'	108.35'	215.49'	S.6647'05"E
75	977.50'	1205'51"	206.59'	104.58'	206.01'	S.6647'05"E
76	53.40'	9201'38"	95.11'	48.07'	95.07'	S.1428'20"E
77	132.50'	3243'58"	75.70'	38.91'	74.67'	N.1455'30"E
78	82.50'	3246'34"	50.05'	25.73'	49.37'	N.1454'12"E
79	102.00'	6174'56"	61.70'	30.85'	61.44'	N.6507'08"W
80	285.88'	7033'04"	352.02'	202.23'	330.20'	S.6344'54"W
81	240.88'	9047'28"	381.70'	244.23'	341.00'	S.7352'06"W
82	180.00'	2918'36"	92.08'	47.07'	91.08'	S.4713'53"E
83	180.00'	3035'46"	96.12'	49.24'	94.98'	S.7111'05"E
84	450.00'	1150'39"	93.02'	46.68'	92.86'	N.8033'38"W
85	450.00'	1235'55"	98.95'	49.68'	98.75'	N.6820'21"W
86	450.00'	1235'49"	101.55'	50.99'	101.34'	N.5534'29"W
87	90.00'	4241'16"	67.05'	33.77'	65.51'	S.7027'17"E
88	90.00'	3818'54"	60.19'	31.27'	59.07'	N.6902'41"E
89	239.28'	1436'44"	61.02'	30.66'	60.86'	N.4234'52"E
90	239.28'	0848'05"	28.41'	14.22'	28.39'	N.3152'26"E
91	30.00'	6045'50"	31.82'	17.59'	30.35'	S.0184'31"E
92	30.00'	5914'10"	31.02'	17.05'	29.65'	N.6154'33"W
93	175.00'	1645'08"	51.17'	26.77'	50.98'	S.4445'24"E
94	175.00'	3413'27"	104.53'	53.88'	102.98'	S.7074'42"E
96	822.49'	0321'46"	48.27'	24.14'	48.27'	S.7302'20"E
97	822.49'	0559'16"	85.97'	43.02'	85.93'	S.6821'46"E
98	822.49'	0704'14"	101.50'	50.91'	101.43'	S.6150'02"E
99	132.50'	1708'10"	39.64'	19.97'	39.49'	S.2243'14"W
100	132.50'	1535'28"	36.06'	18.14'	35.94'	S.0621'15"W
101	650.00'	0649'06"	77.35'	38.72'	77.31'	S.6159'27"E
102	650.00'	0533'36"	100.64'	50.36'	100.60'	S.6452'21"E
103	977.50'	0300'41"	85.50'	42.78'	85.47'	S.7019'40"E
104	1022.50'	0100'00"	17.85'	8.92'	17.85'	N.7220'01"W
105	1022.50'	0531'54"	98.72'	49.40'	98.68'	N.6904'04"W
106	1022.50'	0533'36"	99.53'	49.70'	99.29'	N.6311'09"W
107	1022.50'	0270'21"	41.74'	20.87'	41.74'	S.6305'13"E
108	1022.50'	0456'57"	88.32'	44.19'	88.29'	S.6644'12"E
109	1022.50'	0337'20"	64.64'	32.33'	64.63'	S.7701'20"E
110	977.50'	0128'34"	25.18'	12.59'	25.18'	N.7205'44"W
111	977.50'	0259'18"	102.17'	51.13'	102.12'	N.6821'48"W
112	977.50'	0437'59"	79.04'	39.54'	79.04'	N.6303'09"W
114	240.88'	3037'32"	128.75'	65.96'	127.21'	S.7602'56"E
115	240.88'	3547'45"	150.49'	77.77'	148.05'	N.7074'42"E
116	285.88'	0937'32"	48.03'	24.03'	47.97'	S.8547'21"E
117	285.88'	1453'40"	74.32'	37.33'	74.11'	N.8157'03"E
118	285.88'	1540'54"	78.74'	39.33'	78.00'	N.6639'46"E
119	285.88'	1607'54"	80.24'	40.12'	79.98'	S.5074'35"W
120	285.88'	1416'03"	71.19'	35.70'	71.00'	S.3536'23"W
121	240.88'	2422'13"	102.46'	52.01'	101.89'	N.4039'28"E
122	263.38'	1245'15"	58.53'	29.44'	58.51'	S.6706'47"E
123	263.38'	7802'13"	358.72'	213.42'	331.63'	N.6729'28"E

LINE TABLE

Line	Bearing	Distance
L61	N.0071743"W	60.48'
L62	N.473557"E	116.90'
L63	N.313847"E	89.10'
L64	N.333809"E	77.72'
L65	N.664954"E	23.58'
L66	N.280442"E	120.00'
L67	N.615524"W	26.77'
L68	N.343601"E	45.00'
L69	N.500129"W	56.55'
L70	N.552118"W	111.68'
L71	N.634855"W	89.95'
L72	N.584427"W	188.11'
L73	N.591207"W	94.65'
L74	N.535825"W	72.30'
L75	N.251804"W	74.94'
L76	N.340623"E	78.72'
L77	N.304315"E	88.95'
L78	N.274058"E	94.26'
L79	N.344917"E	46.76'
L80	S.854925"E	84.89'
L81	S.733522"E	76.45'
L83	S.282822"W	86.41'
L84	S.615524"E	99.98'
L85	S.664705"E	81.17'
L86	N.282822"E	137.18'
L87	S.615524"E	99.98'
L88	S.615524"E	73.23'
L89	N.311729"E	81.98'
L90	N.311729"E	108.74'
L91	S.311729"W	146.40'
L92	S.282822"W	286.48'
L93	S.282822"W	298.53'
L94	S.753109"E	46.59'
L95	N.282822"E	35.31'
L96	N.282822"E	9.05'
L97	S.282822"W	100.00'
L98	S.282822"W	151.17'
L99	N.282822"E	80.00'
L100	N.282822"E	100.00'
L101	N.282822"E	109.48'



WILSON · MILLER · BARTON & PEEK, INC.

Engineers-Planners-Surveyors-Landscape Architects-Environmental Consultants-Construction Managers
4571 COLONIAL BOULEVARD, FORT MYERS, FLORIDA 33912 (813) 639-1020 FAX (813) 639-7478